



8-12 Brougham Street Emu Plains NSW

4  2  4 

Discover the ultimate blend of luxury, comfort and functionality in this stunning home that's designed to be your private paradise.

Well suited to family life, with two separate living areas and a home theatre to immerse yourself in movie nights, this modern home has something for everyone. The generous kitchen at the heart of this home is complemented by open plan living and high ceilings, overlooking the merbau deck and private backyard.

The dedicated study hub is perfect for productivity and focus, while the lush, grassed yard provides ample space for you to enjoy with kids and pets when the work is done.

Type : House
Land Size : 945 sqm
View : <https://www.aitkenre.com.au/8059014>



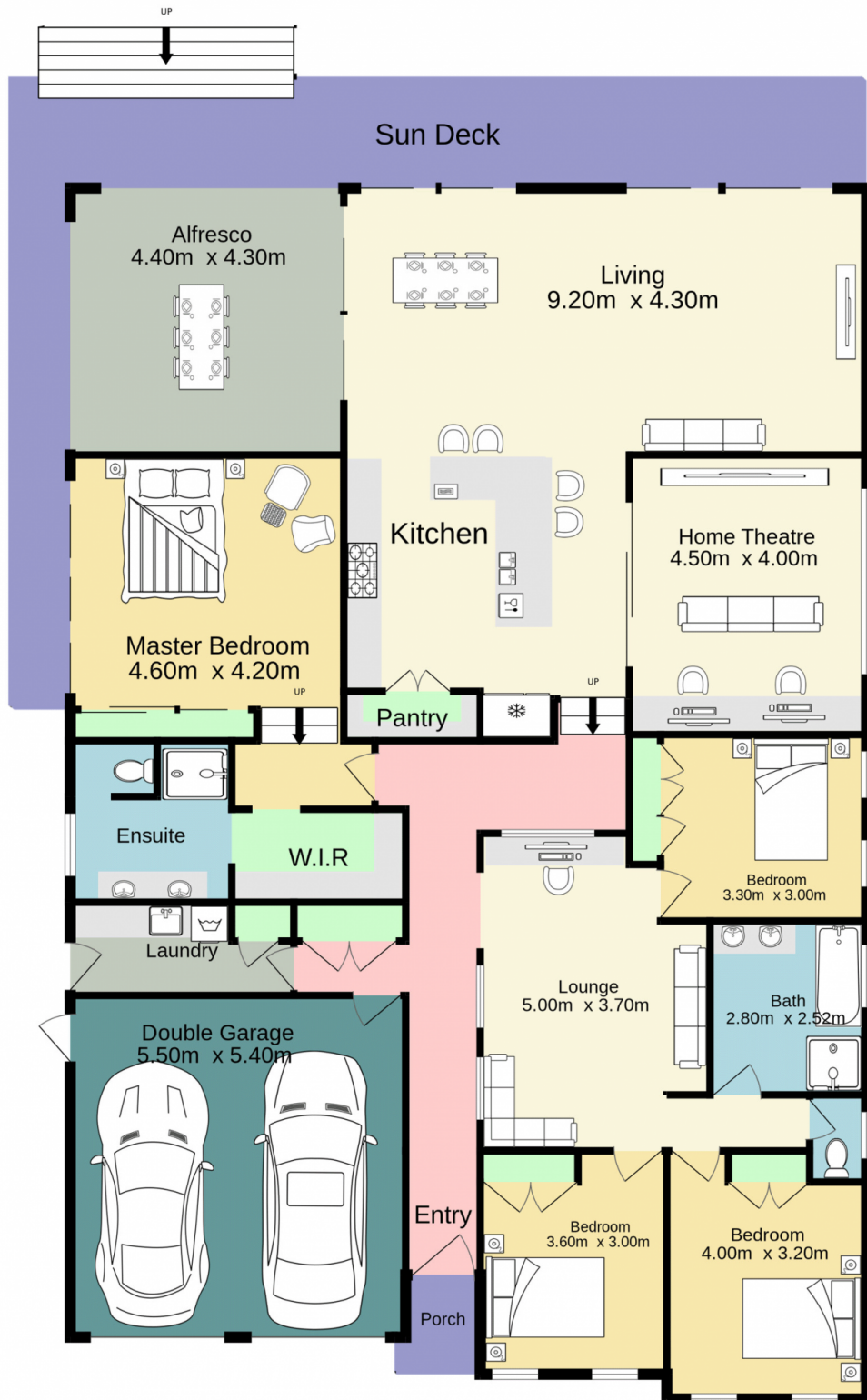
David Reeves
02 4735 2121



Andrew Lia
02 4735 2121

[For full version visit the website](https://www.aitkenre.com.au)

240.9



TOTAL FLOOR AREA : 240.9 sq.m. approx.

Whilst every attempt has been made to ensure the accuracy of the floorplan contained here, measurements of doors, windows, rooms and any other items are approximate and no responsibility is taken for any error, omission or mis-statement. This plan is for illustrative purposes only and should be used as such by any prospective purchaser. The services, systems and appliances shown have not been tested and no guarantee as to their operability or efficiency can be given.
Made with Metropix ©2024