



17 Sylvan Place Leonay NSW

4  3  3 

Discover unparalleled serenity with this exquisite property boasting breathtaking views of the tranquil Nepean River.

Nestled in the heart of this serene leafy suburb, this split-level home stands as a testament to classic charm and thoughtful design. Showcasing exposed timber features that add warmth and character, the residence invites you to explore its unique layout.

Genuine floorboards guide you through a bespoke design, expertly crafted to harmonize with the gently sloping block. Internally, the home seamlessly transitions to unveil tasteful renovations, striking a perfect balance between tradition and modern comfort.

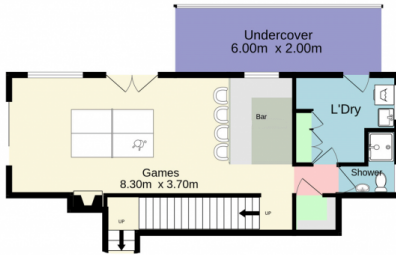
Type : House
Land Size : 556 sqm
View : <https://www.aitkenre.com.au/8059002>



David Reeves
02 4735 2121

[For full version visit the website](https://www.aitkenre.com.au)

Basement
47.6 sq.m. approx.



Ground floor
188.0 sq.m. approx.



TOTAL FLOOR AREA : 235.6 sq.m. approx.

Whilst every attempt has been made to ensure the accuracy of the floorplan contained here, measurements of doors, windows, rooms and any other items are approximate and no responsibility is taken for any error, omission or mis-statement. This plan is for illustrative purposes only and should be used as such by any prospective purchaser. The services, systems and appliances shown have not been tested and no guarantee as to their operability or efficiency can be given.

Made with Metropix ©2024