



**35 Grey Street Emu Plains NSW**

4 2 2

Immerse yourself in the beauty of perfectly manicured gardens, where every blade of grass and each bloom has been thoughtfully tended to. This glorious setting creates an atmosphere of peace and serenity, all while enhancing the overall allure of this enviable property.

- + With two separate living areas, this home offers the flexibility to meet all your lifestyle needs. Enjoy family movie nights in one room while the other serves as a peaceful sanctuary for relaxation and reflection.
- + Experience year-round comfort with ducted air conditioning that keeps you cool in summer and cozy in winter.
- + Escape the world and retreat to your very own private backyard oasis surrounded by thoughtfully designed

**Type** : House  
**Price** : \$ 1,225,000  
**Land Size** : 625 sqm  
**View** : <https://www.aitkenre.com.au/8058967>

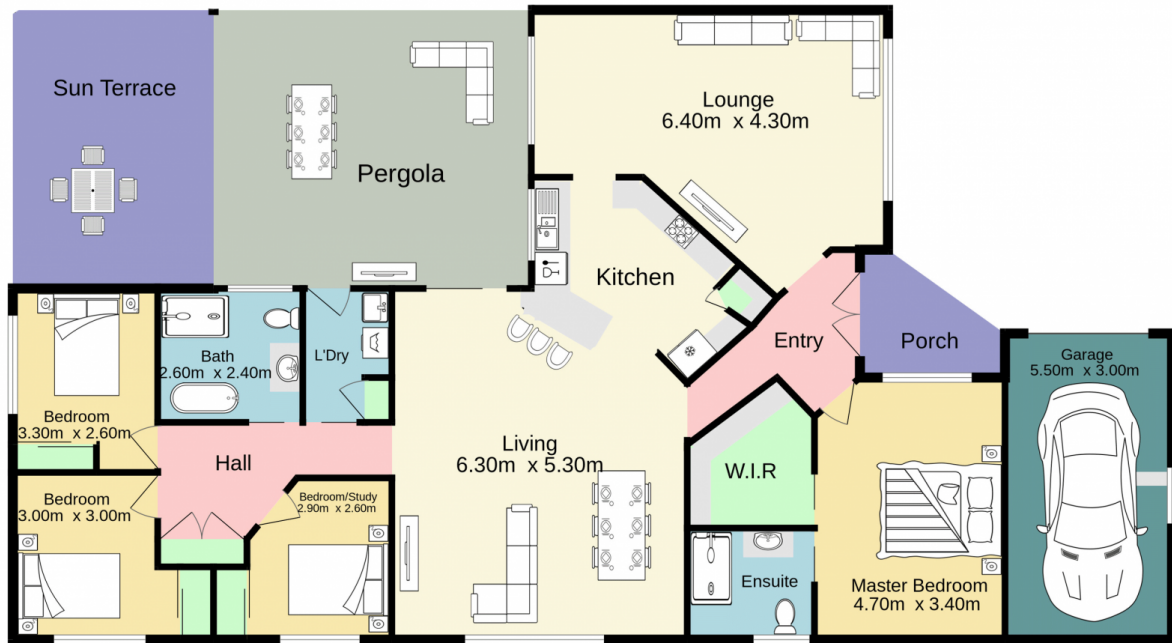


**David Reeves**  
02 4735 2121



**Andrew Lia**  
02 4735 2121

[For full version visit the website](https://www.aitkenre.com.au)



 **Jim Aitken**  
Partners



TOTAL FLOOR AREA : 184.4 sq.m. approx.

Whilst every attempt has been made to ensure the accuracy of the floorplan contained here, measurements of doors, windows, rooms and any other items are approximate and no responsibility is taken for any error, omission or mis-statement. This plan is for illustrative purposes only and should be used as such by any prospective purchaser. The services, systems and appliances shown have not been tested and no guarantee as to their operability or efficiency can be given.  
Made with Metropix ©2023