



## 6/4 The Crescent Penrith NSW

2  1  2 

We're thrilled to introduce you to this classic top-floor unit that's nestled in a small complex on the fringe of Penrith's vibrant CBD.

- + This fantastic unit offers the perfect blend of comfort, convenience and affordability.
- + Floating floors add a touch of sophistication and warmth to your living space.
- + Experience the convenience of an internal laundry for your washing needs.
- + Commuting is a breeze with the train station just a stone's throw away.
- + Westfield Shopping Centre is nearby where you'll find an array of retail stores and dining options.
- + With the ever-growing medical precinct in the vicinity,

**Type** : Unit

**View** : <https://www.aitkenre.com.au/8058943>

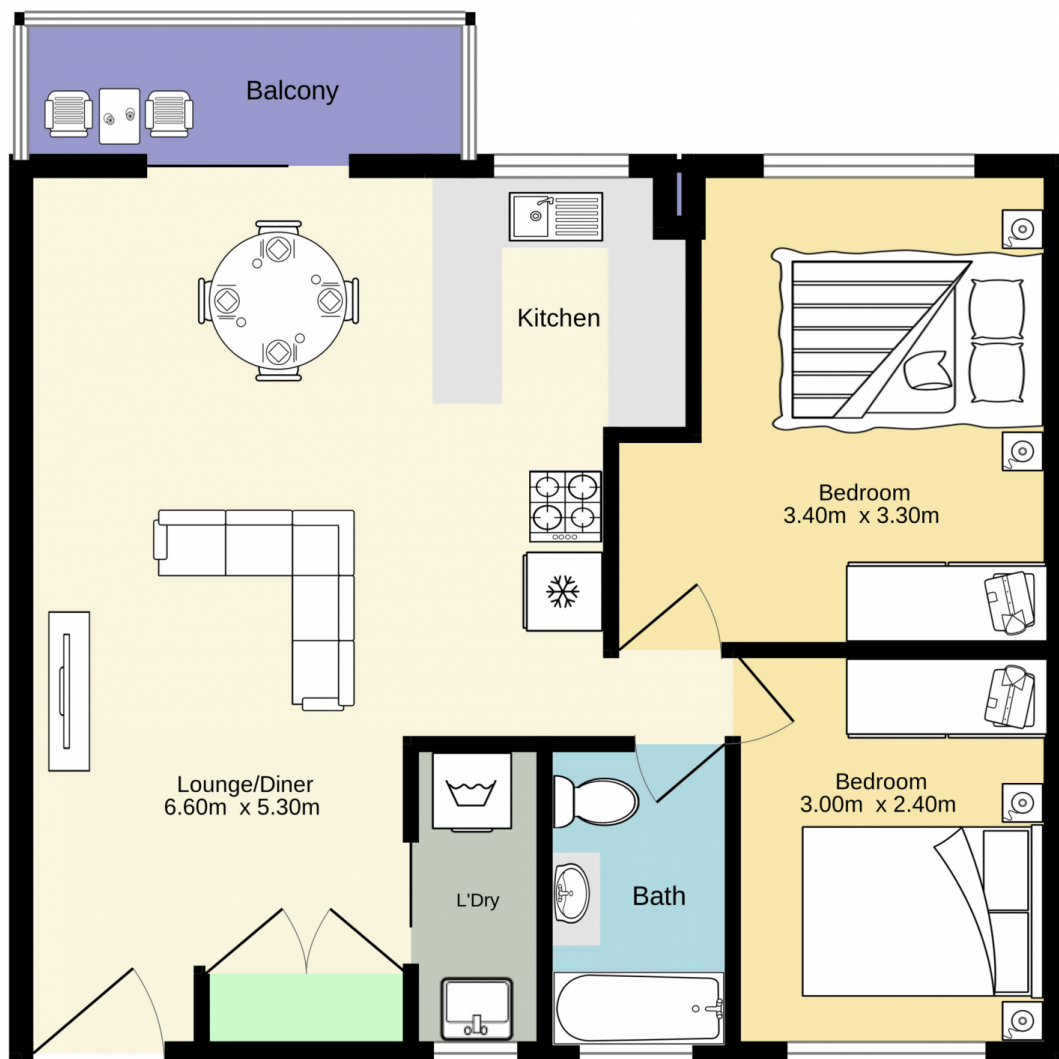


**Richard Stewart**  
02 4735 2121



**Xavier Whalen**  
02 4735 2121

[For full version visit the website](https://www.aitkenre.com.au)



TOTAL FLOOR AREA : 50.7 sq.m. approx.

Whilst every attempt has been made to ensure the accuracy of the floorplan contained here, measurements of doors, windows, rooms and any other items are approximate and no responsibility is taken for any error, omission or mis-statement. This plan is for illustrative purposes only and should be used as such by any prospective purchaser. The services, systems and appliances shown have not been tested and no guarantee as to their operability or efficiency can be given.  
Made with Metropix ©2023