






## 27 - 30 Linden Crescent Cranebrook NSW

4  3  6 

Imagine a place where your children or grandchildren can run freely, explore nature, ride mini bikes, and climb trees. Picture hosting family BBQs and annual cricket matches in a backyard spacious enough for all your loved ones to gather. Envision a lifestyle where you can raise chickens, care for horses, and grow fresh vegetables in beautifully crafted, ready-made garden beds. All of this is possible without giving up the convenience and amenities of city life.

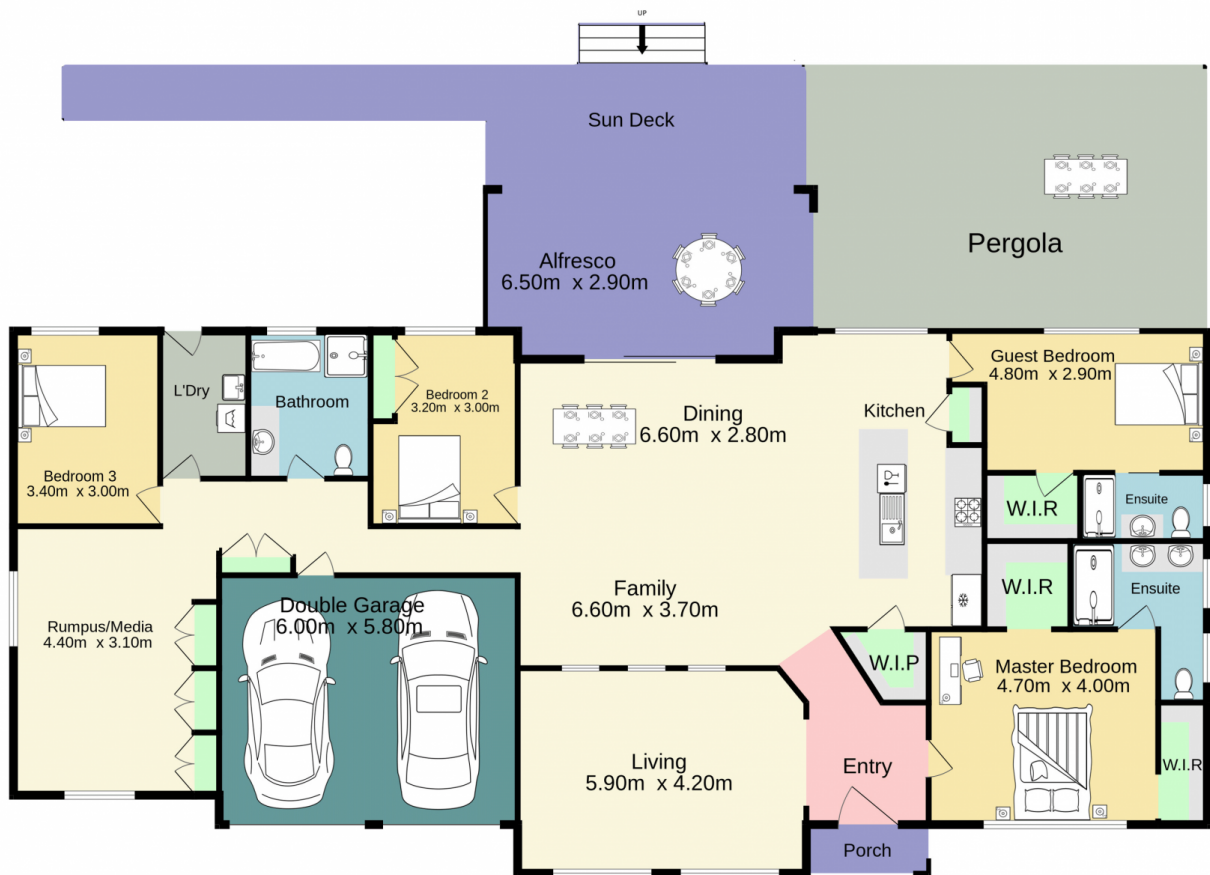
In this idyllic setting, you can enjoy the best of both worlds. The expansive outdoor space offers endless opportunities for adventure and play, providing a safe and secure environment where children can truly enjoy their childhood. The ready-made garden beds make sustainable living easy, allowing you to cultivate your own vegetables and

**Type** : House  
**Land Size** : 5192 sqm  
**View** : <https://www.aitkenre.com.au/8058935>



**Andrew Lia**  
**02 4735 2121**

[For full version visit the website](https://www.aitkenre.com.au)



TOTAL FLOOR AREA : 291.3 sq.m. approx.

Whilst every attempt has been made to ensure the accuracy of the floorplan contained here, measurements of doors, windows, rooms and any other items are approximate and no responsibility is taken for any error, omission or mis-statement. This plan is for illustrative purposes only and should be used as such by any prospective purchaser. The services, systems and appliances shown have not been tested and no guarantee as to their operability or efficiency can be given.

Made with Metropix ©2023