



56 Westbank Avenue Emu Plains NSW

4  2  4 

Situated just moments from the enchanting Nepean River, this property provides you with the opportunity to enjoy the serene beauty of nature, take leisurely walks along the riverbanks, and indulge in outdoor activities like picnics and kayaking, all within arm's reach.

Type : House
Land Size : 702 sqm
View : <https://www.aitkenre.com.au/8058930>

- + The expansive dining/family zone serves as the heart of the home, making it easy to create cherished memories around the table. Whether it's daily family meals or hosting special occasions, this space is perfect for it all.
- + Entertain family and friends in the dedicated rumpus room or media room, perfect for movie nights and game days complete with an integrated speaker system.
- + Stay comfortable year-round with both ducted and split system air conditioning. No matter the weather outside,

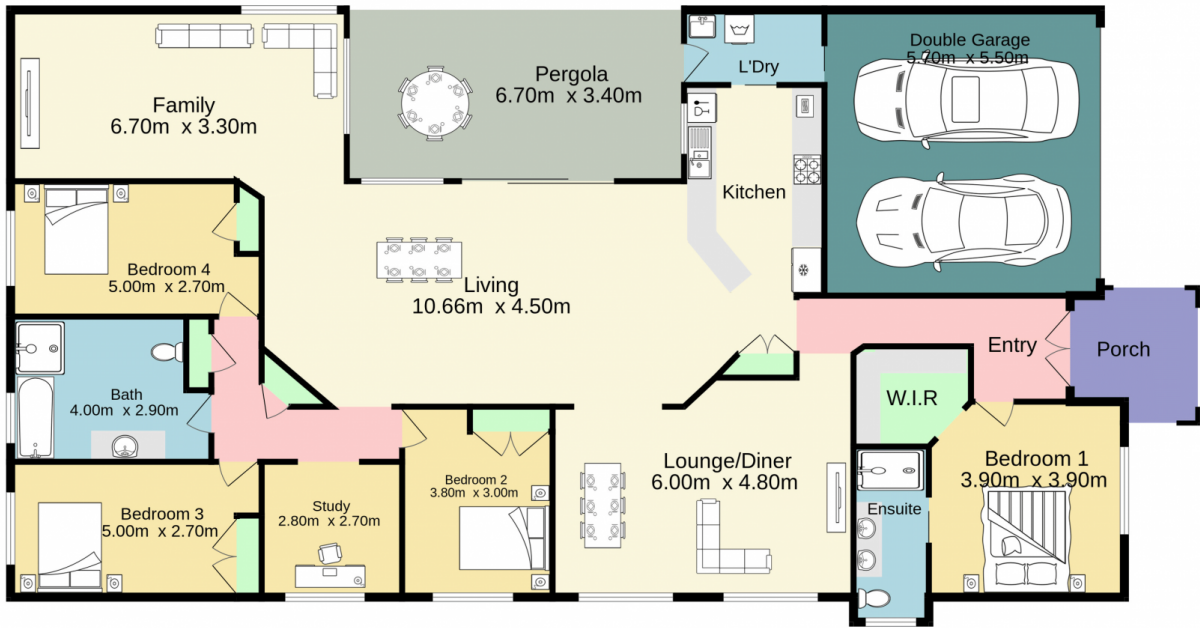


David Reeves
 02 4735 2121



Andrew Lia
 02 4735 2121

[For full version visit the website](https://www.aitkenre.com.au)



TOTAL FLOOR AREA : 255.6 sq.m. approx.

Whilst every attempt has been made to ensure the accuracy of the floorplan contained here, measurements of doors, windows, rooms and any other items are approximate and no responsibility is taken for any error, omission or mis-statement. This plan is for illustrative purposes only and should be used as such by any prospective purchaser. The services, systems and appliances shown have not been tested and no guarantee as to their operability or efficiency can be given.
Made with Metropix ©2023