



18 Sylvan Place Leonay NSW

4  3  4 

Welcome to your new oasis of elegance and comfort! Nestled in a serene neighborhood, this stunning multi-level home offers a lifestyle of grandeur and relaxation. With its unparalleled features and picturesque surroundings, it's a true gem that deserves your immediate attention.

- + Spread out and revel in the expansive floor plan that boasts multiple levels, offering ample space for relaxation and entertainment.
- + Indulge your senses with timeless charm and character through the exposed brick accents that create a warm and inviting atmosphere.
- + Start your day with a fresh breeze on your face as you step onto your private balcony accessed directly from one of the bedrooms.

Type : House
Land Size : 670 sqm
View : <https://www.aitkenre.com.au/8058895>



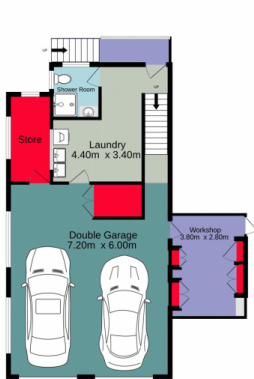
David Reeves
02 4735 2121



Andrew Lia
02 4735 2121

[For full version visit the website](https://www.aitkenre.com.au)

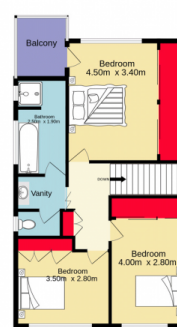
Ground floor
129.3 sq.m. approx.



Entrance floor
121.1 sq.m. approx.



1st floor
64.1 sq.m. approx.



TOTAL FLOOR AREA : 314.5 sq.m. approx.

Whilst every attempt has been made to ensure the accuracy of the floorplan contained here, measurements of doors, windows, rooms and any other items are approximate and no responsibility is taken for any error, omission or mis-statement. This plan is for illustrative purposes only and should be used as such by any prospective purchaser. The services, systems and appliances shown have not been tested and no guarantee as to their operability or efficiency can be given.
Made with Metropix ©2023