



216 Nepean Street Leonay NSW

4  2  2 

This perfect family home embodies both timeless charm and potential for a remarkable transformation. On offer is a rare property located in the most desirable location just steps away from the Nepean River!

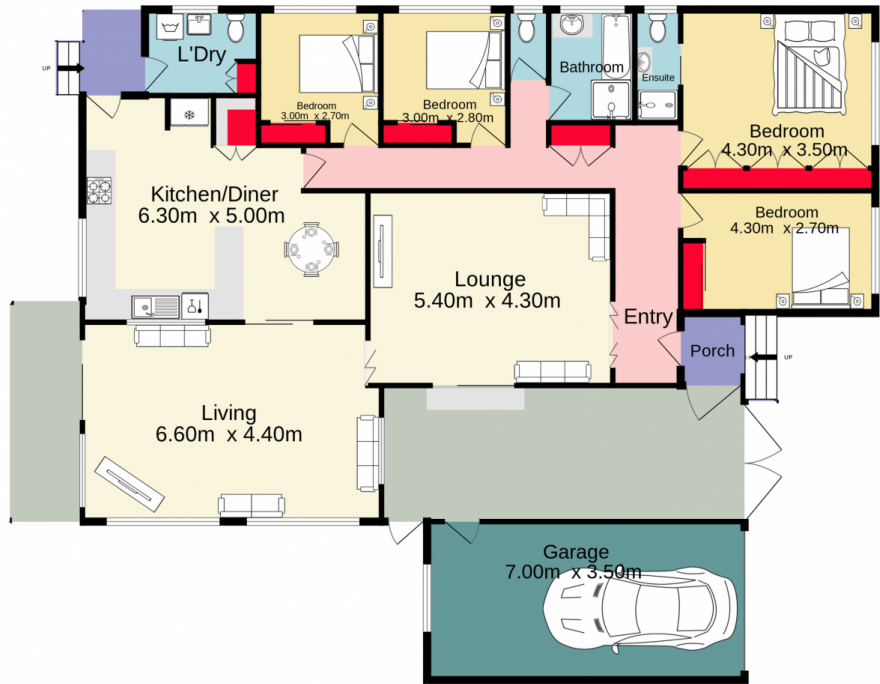
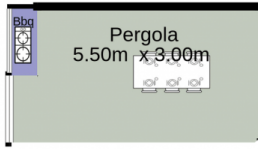
- + Wake up to the awe-inspiring vistas of a stunning waterway
- + Enjoy ample living spaces that foster togetherness, creating the perfect family setting
- + Embrace an active lifestyle from kayaking to riverbank picnics or an afternoon stroll
- + Large cooking quarters that overlooks the in ground pool & alfresco space
- + Two separate and spacious living areas
- + Ample storage solutions with built in wardrobes

Type : House
Land Size : 651 sqm
View : <https://www.aitkenre.com.au/8058889>



David Reeves
02 4735 2121

[For full version visit the website](https://www.aitkenre.com.au)



Jim Aitken
Partners



TOTAL FLOOR AREA : 227.3 sq.m. approx.

Whilst every attempt has been made to ensure the accuracy of the floorplan contained here, measurements of doors, windows, rooms and any other items are approximate and no responsibility is taken for any error, omission or mis-statement. This plan is for illustrative purposes only and should be used as such by any prospective purchaser. The services, systems and appliances shown have not been tested and no guarantee as to their operability or efficiency can be given.
Made with Metropix ©2023