



## 22 Leicester Way St Clair NSW

3  2  4 

Centrally located this home positions you in the hub of the St Clair community. Moments from schools, shops and the motorway, you'll just love the convenience on offer.

- + Built in wardrobes to all bedrooms
- + Split system air conditioning | fireplace
- + Enclosed sun room | covered entertaining
- + Two separate living zones
- + Swimming Pool
- + Approx 1600m to Motorway
- + Approx 850m to shopping centre

DISCLAIMER: Whilst we deem this information to be reliable the agent cannot guarantee its accuracy and accepts no responsibility for such. Interested persons

**Type** : House  
**Land Size** : 627 sqm  
**View** : <https://www.aitkenre.com.au/8058875>

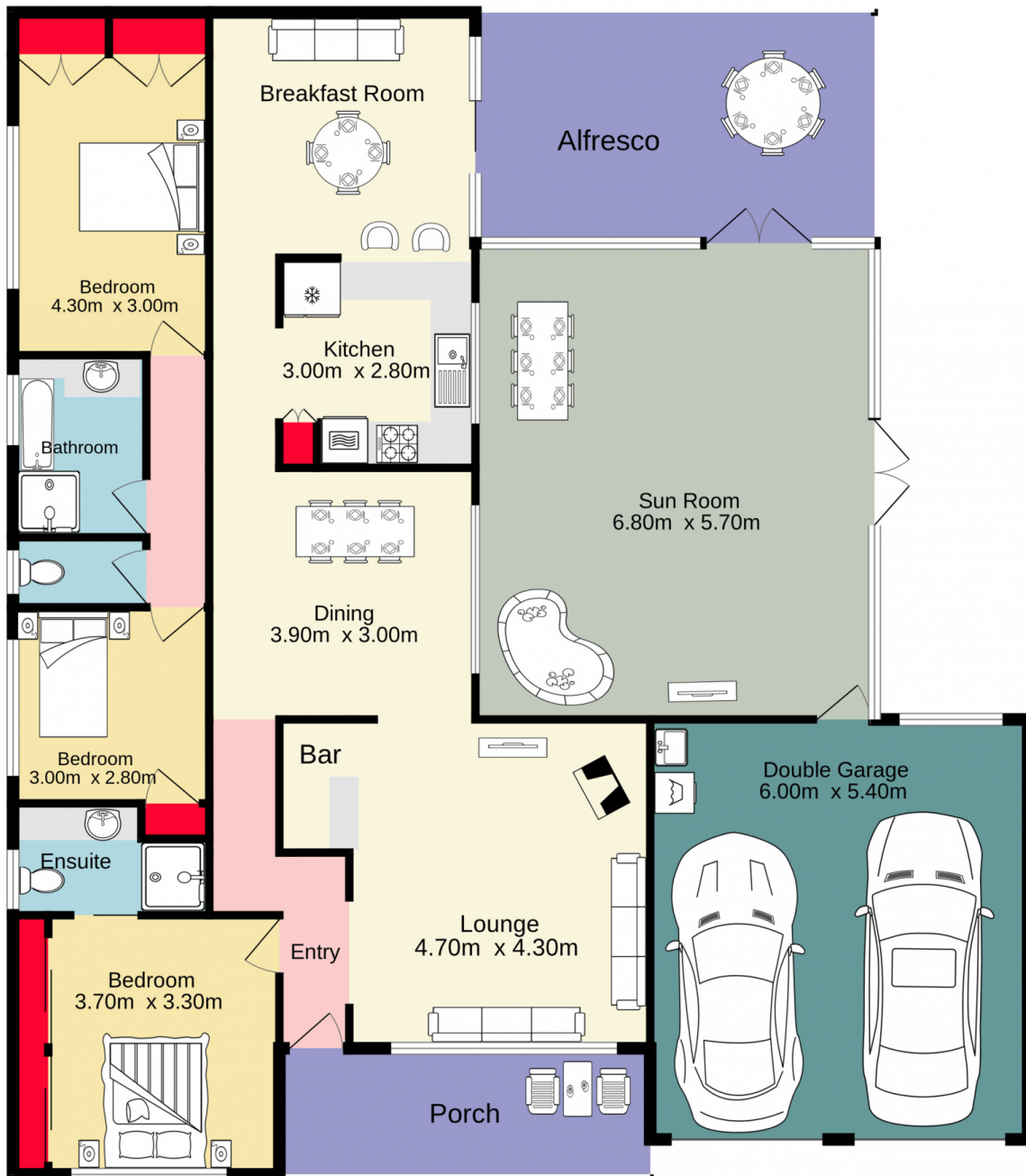


**Andrew Lia**  
02 4735 2121



**Robert Rolls**  
02 4732 5055

[For full version visit the website](https://www.aitkenre.com.au)



TOTAL FLOOR AREA : 186.9 sq.m. approx.

Whilst every attempt has been made to ensure the accuracy of the floorplan contained here, measurements of doors, windows, rooms and any other items are approximate and no responsibility is taken for any error, omission or mis-statement. This plan is for illustrative purposes only and should be used as such by any prospective purchaser. The services, systems and appliances shown have not been tested and no guarantee as to their operability or efficiency can be given.

Made with Metropix ©2023