



15 Rosemont Avenue Emu Plains NSW

4  1  4 

There's room for everyone in this unassuming family home. Updated over time and well preserved, you can move straight in or make changes and add your own touch. Ideally positioned between the Lennox Shopping Centre and train station.

- + Genuine timber flooring
- + Updated bathroom
- + Study | utility room
- + Built in wardrobes | Walk in robe to main
- + Expansive covered alfresco space
- + Detached garage with toilet | plumbing
- + Position perfect

DISCLAIMER: Whilst we deem this information to be

[For full version visit the website](https://www.aitkenre.com.au)

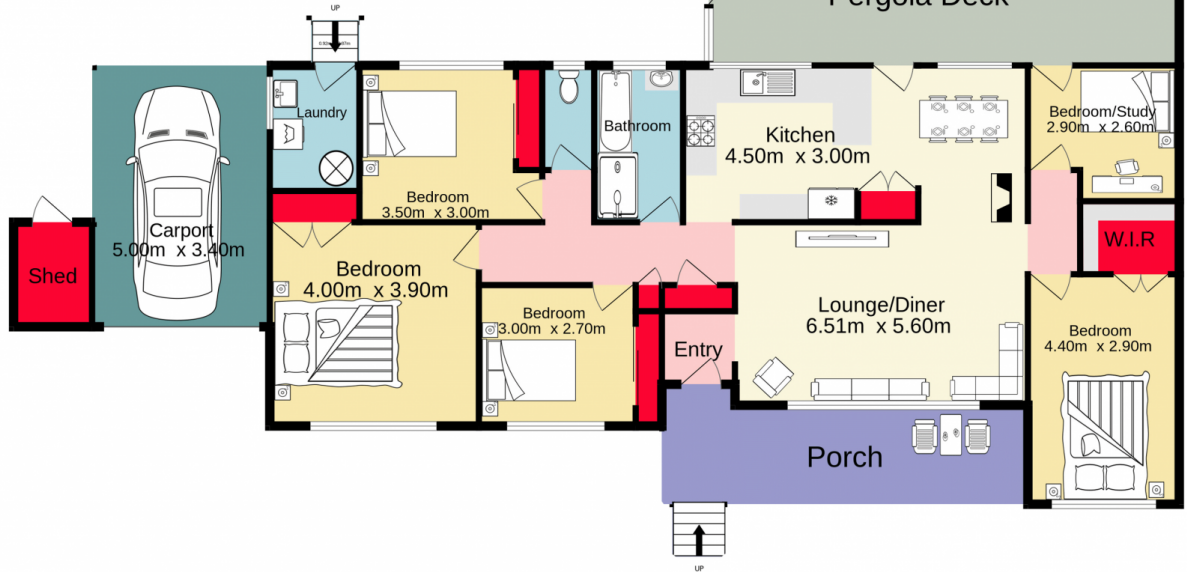
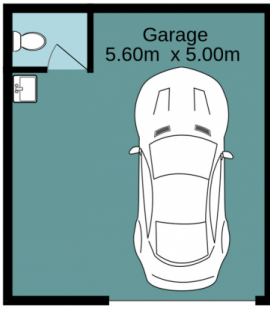
Type : House
Price : \$ 865,000
Land Size : 626 sqm
View : <https://www.aitkenre.com.au/8058848>



David Reeves
02 4735 2121



Andrew Lia
02 4735 2121



TOTAL FLOOR AREA : 207.2 sq.m. approx.

Whilst every attempt has been made to ensure the accuracy of the floorplan contained here, measurements of doors, windows, rooms and any other items are approximate and no responsibility is taken for any error, omission or mis-statement. This plan is for illustrative purposes only and should be used as such by any prospective purchaser. The services, systems and appliances shown have not been tested and no guarantee as to their operability or efficiency can be given.

Made with Metropix ©2023

