



28 Salerno Close Emu Heights NSW

3  1  10 

The private position provides a level of security and exclusivity that is hard to find in today's busy world. You'll love the feeling of seclusion as you make your way down the driveway to this wonderful property.

- + Practical two way bathroom | separate toilet
- + The comfort of ducted air conditioning
- + Two separate living zones
- + Private and large rear grounds
- + Extensive vehicle | caravan | boat | trailer accommodation
- + Generous side access to large backyard
- + Cul de sac location

DISCLAIMER: Whilst we deem this information to be

[For full version visit the website](https://www.aitkenre.com.au/8058844)

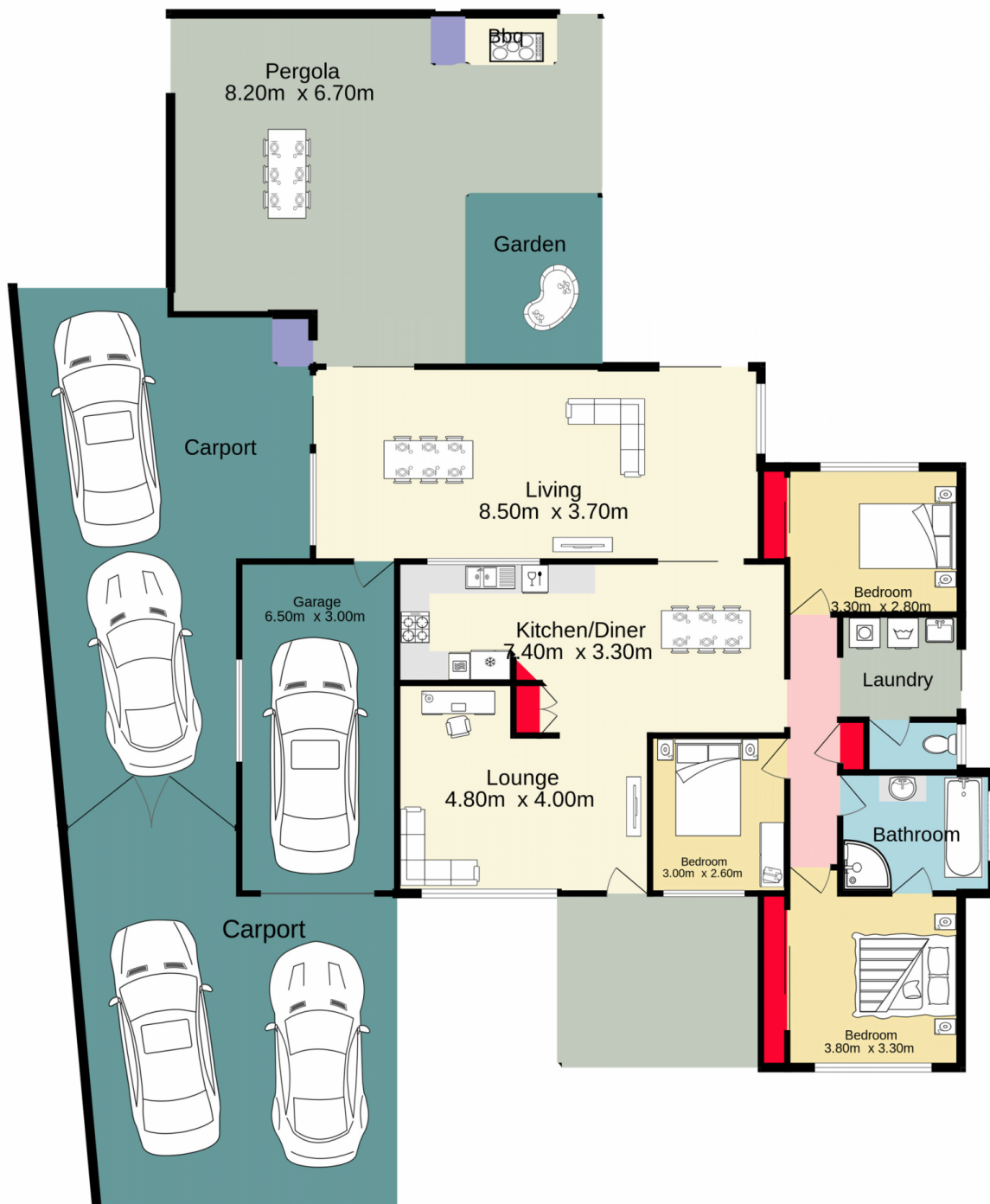
Type : House
Land Size : 982 sqm
View : <https://www.aitkenre.com.au/8058844>



David Reeves
02 4735 2121



Andrew Lia
02 4735 2121



Jim Aitken
Partners



TOTAL FLOOR AREA : 287.0 sq.m. approx.

Whilst every attempt has been made to ensure the accuracy of the floorplan contained here, measurements of doors, windows, rooms and any other items are approximate and no responsibility is taken for any error, omission or mis-statement. This plan is for illustrative purposes only and should be used as such by any prospective purchaser. The services, systems and appliances shown have not been tested and no guarantee as to their operability or efficiency can be given.

Made with Metropix ©2023