






51 Westbank Avenue Emu Plains NSW

5  2  4 

Enjoying grand proportions, this home ensures that a growing family can relish the expansive space they truly deserve. Situated just moments away from the picturesque banks of the esteemed Nepean River, returning to this residence will undoubtedly make you the envy of your friends.

The modern ambiance and an array of living zones throughout the home are bound to leave a lasting impression. Enjoy the convenience of ducted air conditioning, plantation shutters, ceiling fans and solar panels, showcasing a commitment to comfortable living. The property boasts outdoor living perfect for hosting social gatherings, all meticulously maintained to perfection.

Type : House

View : <https://www.aitkenre.com.au/8058790>

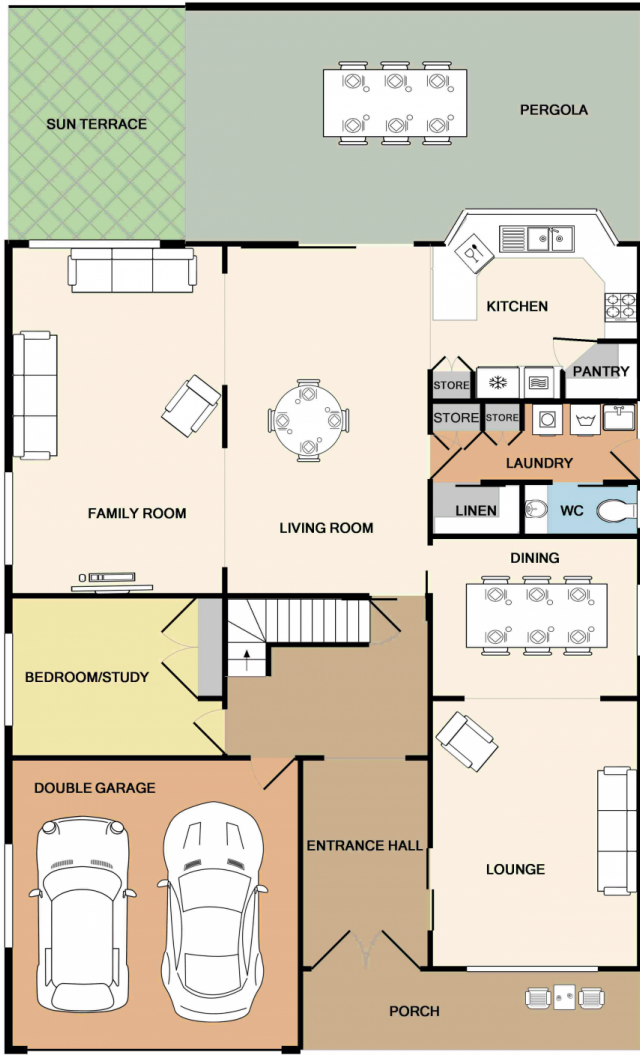


David Reeves
02 4735 2121

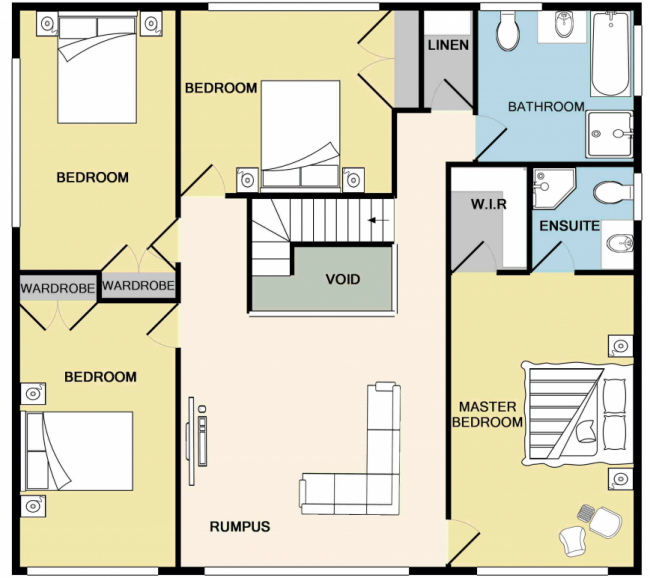


Andrew Lia
02 4735 2121

[For full version visit the website](https://www.aitkenre.com.au)



GROUND FLOOR



1ST FLOOR



Whilst every attempt has been made to ensure the accuracy of the floor plan contained here, measurements of doors, windows, rooms and any other items are approximate and no responsibility is taken for any error, omission, or mis-statement. This plan is for illustrative purposes only and should be used as such by any prospective purchaser. The services, systems and appliances shown have not been tested and no guarantee as to their operability or efficiency can be given.
 Made with Metropix ©2018