



11 Kohlenberg Close Emu Plains NSW

4 2 4

Nestled among other quality homes is an opportunity to secure a residence that will make you the envy of your friends. The polyurethane kitchen with massive island bench is the homes centre piece and looks out to the family and dining areas. The extensive use of glass allows an abundance of natural light to filter through from the alfresco area and rear yard. Dressed in a modern facade only an inspection will allow you to experience the lifestyle on offer.

Type : House
Price : \$ 1,315,000
Land Size : 687 sqm
View : <https://www.aitkenre.com.au/8058769>

- + The comfort of ducted air conditioning
- + Master suite with private courtyard
- + Dedicated media room
- + Family | pet friendly backyard
- + Landscaped gardens
- + Popular cul de sac position

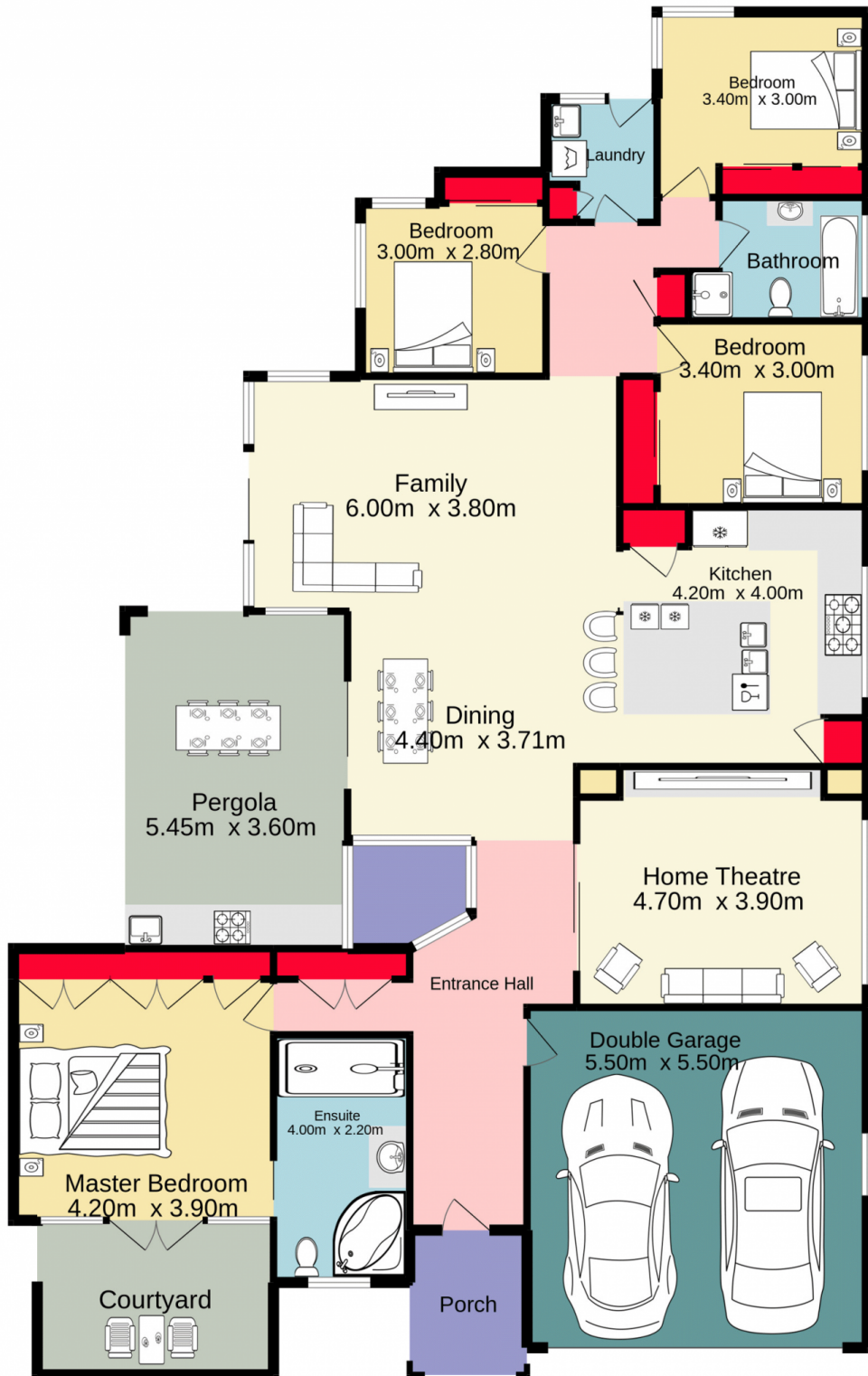


David Reeves
02 4735 2121



Dillon Blundell
02 4732 5055

[For full version visit the website](https://www.aitkenre.com.au)



TOTAL FLOOR AREA : 221.6 sq.m. approx.

Whilst every attempt has been made to ensure the accuracy of the floorplan contained here, measurements of doors, windows, rooms and any other items are approximate and no responsibility is taken for any error, omission or mis-statement. This plan is for illustrative purposes only and should be used as such by any prospective purchaser. The services, systems and appliances shown have not been tested and no guarantee as to their operability or efficiency can be given.
 Made with Metropix ©2022