



22 Woodi Close Glenmore Park NSW

3  1  2 

Whether you're a first home buyer, an astute investor or are simply looking to downsize this home deserves your immediate attention! Nestled at the end of a no through road and occupying a practical parcel of land the home contains a number of features that are sure to make for a comfortable and low maintenance lifestyle.

- + Lounge | dining | family room
- + Split system air conditioning
- + Ceiling fans throughout
- + Built in robes to all bedrooms
- + Stone kitchen bench top
- + Stainless steel kitchen appliances
- + Dishwasher
- + Lock up garage

Type : House
Price : \$ 755,000
Land Size : 400 sqm
View : <https://www.aitkenre.com.au/8058754>

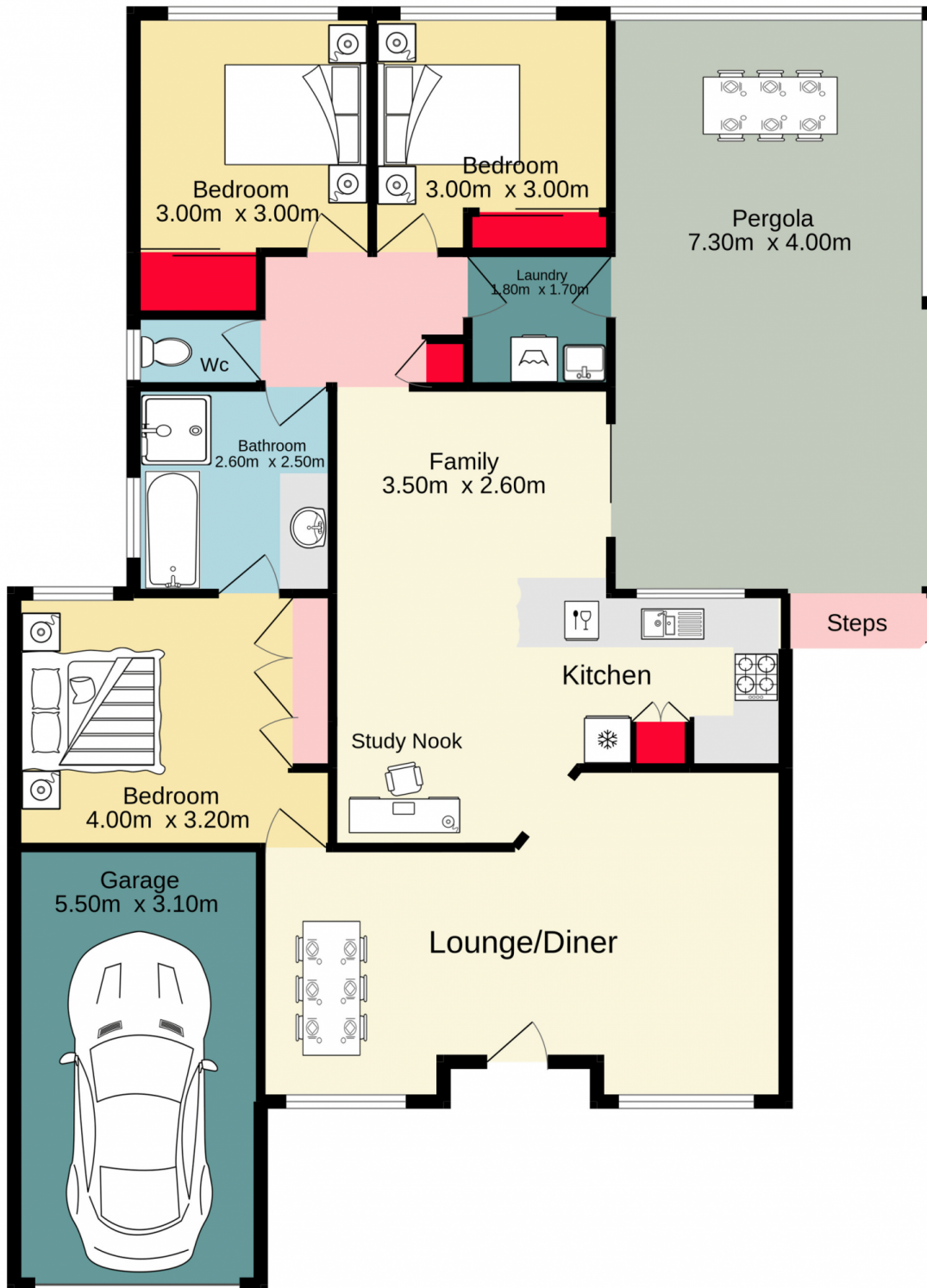


Dillon Blundell
02 4732 5055



Diego Benitez
02 4733 6999

[For full version visit the website](https://www.aitkenre.com.au)



Jim Aitken
+ Partners



Whilst every attempt has been made to ensure the accuracy of the floorplan contained here, measurements of doors, windows, rooms and any other items are approximate and no responsibility is taken for any error, omission or mis-statement. This plan is for illustrative purposes only and should be used as such by any prospective purchaser. The services, systems and appliances shown have not been tested and no guarantee as to their operability or efficiency can be given.
Made with Metropix ©2022