



31 Gunyah Drive Glenmore Park NSW

4  2  4 

Be the King and Queen of this castle! Standing proudly in the later stages of Glenmore Park, this expansive residence will offer you and your family the space they deserve.

- + Steel frame - Eden Brae Home
- + Free flowing casual living spaces
- + Upstairs rumpus | games room
- + The comfort of ducted air conditioning throughout
- + Sun drenched alfresco zone
- + Approx 1400m to The Northern Road
- + Approx 260m to Sporting Fields

You can inspect our properties at both open homes and by appointment and of course, bring your partner and family

[For full version visit the website](https://www.aitkenre.com.au/8058714)

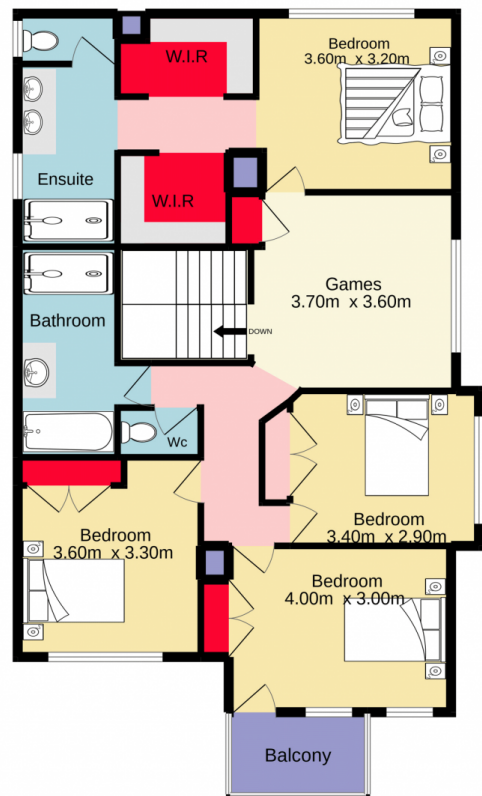
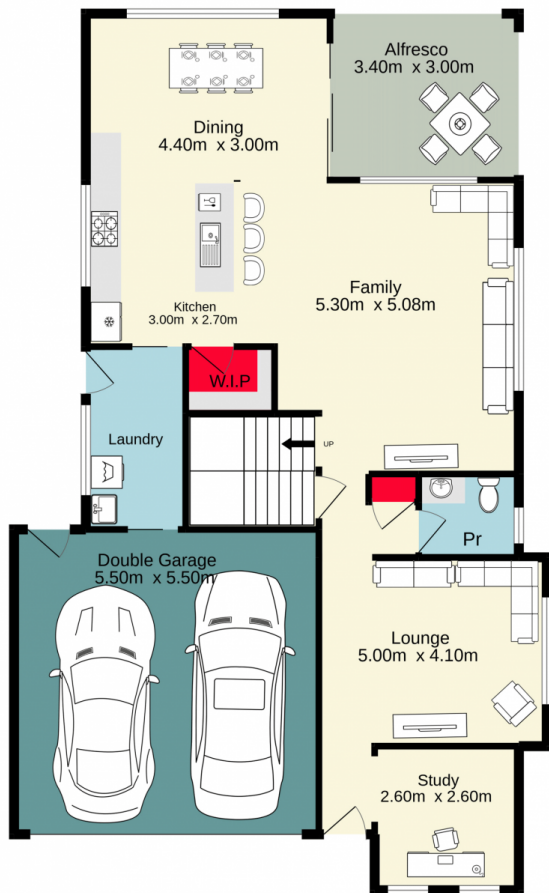
Type : House
Price : \$ 1,300,000
Land Size : 443 sqm
View : <https://www.aitkenre.com.au/8058714>



David Reeves
 02 4735 2121

Ground floor
126.9 sq.m. approx.

1st floor
95.6 sq.m. approx.



Jim Aitken
+ Partners



TOTAL FLOOR AREA : 222.4 sq.m. approx.

Whilst every attempt has been made to ensure the accuracy of the floorplan contained here, measurements of doors, windows, rooms and any other items are approximate and no responsibility is taken for any error, omission or mis-statement. This plan is for illustrative purposes only and should be used as such by any prospective purchaser. The services, systems and appliances shown have not been tested and no guarantee as to their operability or efficiency can be given.
Made with Metropix ©2022