



9 Tern Place Yarramundi NSW

5  3  6 

Escape to a life of tranquility where community living meets serenity. This sprawling residence is a masterpiece of luxury living, meticulously constructed to the highest quality, and designed for those who appreciate the finer things in life. With breathtaking views from every window and balcony, this home is truly an entertainer's dream.

+ Situated on over an acre with wide access to the rear grounds

+ Formal entry and lounge area with wonderfully high ceilings & elegant bamboo flooring.

+ Gourmet kitchen enjoys a stone bench top, LG dishwasher, SMEG 900mm gas cooker, stainless steel range hood, glass splash back, wine rack, and a spacious walk-in pantry.

+ Expansive lounge and dining areas provide the perfect

Type : House
Price : \$ 1,975,000
Land Size : 4407 sqm
View : <https://www.aitkenre.com.au/8058709>

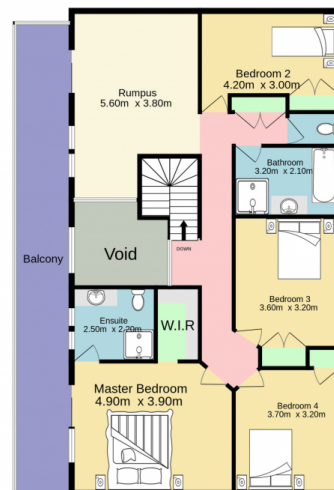


David Reeves
02 4735 2121



Kenrick Muir
02 4732 5055

[For full version visit the website](https://www.aitkenre.com.au)



TOTAL FLOOR AREA : 457.7 sq.m. approx.

Whilst every attempt has been made to ensure the accuracy of the floorplan contained here, measurements of doors, windows, rooms and any other items are approximate and no responsibility is taken for any error, omission or mis-statement. This plan is for illustrative purposes only and should be used as such by any prospective purchaser. The services, systems and appliances shown have not been tested and no guarantee as to their operability or efficiency can be given.
Made with Metropix ©2023