

11 Avalon Crescent Glenmore Park NSW

5  4  6 

This expansive residence offers the epitome of modern living with a grand scale that is simply breathtaking. This remarkable property is not just a home; it's a lifestyle. Whether you're relaxing by the pool, working from your home office, or hosting a grand soire, this home has it all.

- + Enjoy the convenience of a master bedroom on each level, perfect for multi-generational living or accommodating guests in style.
- + Indulge in the abundance of space within multiple living areas that provide seamless flow and versatility for any occasion.
- + Boost your productivity in the dedicated home office space that's strategically positioned to maximise privacy.
- + Stay comfortable year-round with ducted air conditioning

Type : House
Land Size : 966 sqm
View : <https://www.aitkenre.com.au/8058701>



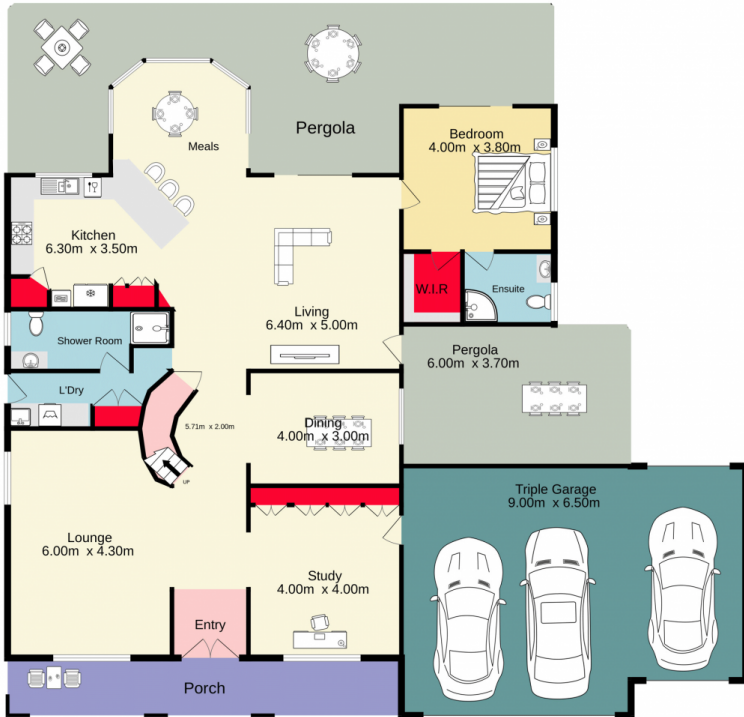
Andrew Lia
 02 4735 2121



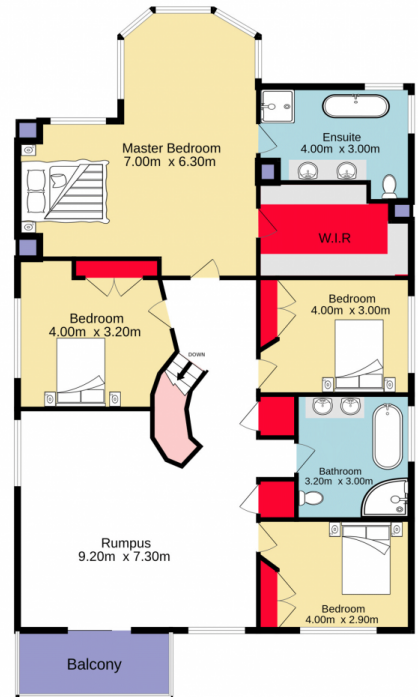
Diego Benitez
 02 4733 6999

[For full version visit the website](https://www.aitkenre.com.au)

Ground floor
287.9 sq.m. approx.



1st floor
149.2 sq.m. approx.



TOTAL FLOOR AREA : 437.1 sq.m. approx.

Whilst every attempt has been made to ensure the accuracy of the floorplan contained here, measurements of doors, windows, rooms and any other items are approximate and no responsibility is taken for any error, omission or mis-statement. This plan is for illustrative purposes only and should be used as such by any prospective purchaser. The services, systems and appliances shown have not been tested and no guarantee as to their operability or efficiency can be given.
Made with Metropix ©2023

