



## 46 River Road Emu Plains NSW

4  3  4 

Experience the epitome of luxury living with this exquisite home nestled along the serene banks of the Nepean River. From the moment you enter this stunning property, you'll be captivated by its grandeur, spaciousness, and breathtaking views. Welcome to a world of comfort, where every detail has been meticulously designed to cater to your utmost desires.

+ This home boasts expansive living areas that invite natural light to dance through every room. The generous floor plan provides a sense of openness that's perfect for family living

+ The generously sized master bedroom suite is complemented by a walk-in robe that offers ample storage for your couture collection.

**Type** : House  
**Land Size** : 834 sqm  
**View** : <https://www.aitkenre.com.au/8058698>



**David Reeves**  
02 4735 2121



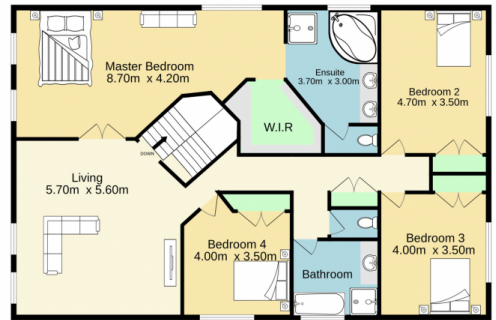
**Andrew Lia**  
02 4735 2121

[For full version visit the website](https://www.aitkenre.com.au)

Ground floor  
280.6 sq.m. approx.



1st floor  
150.6 sq.m. approx.



TOTAL FLOOR AREA: 431.2 sq.m. approx.

Whilst every attempt has been made to ensure the accuracy of the floorplan contained here, measurements of doors, windows, rooms and any other items are approximate and no responsibility is taken for any error, omission or mis-statement. This plan is for illustrative purposes only and should be used as such by any prospective purchaser. The services, systems and appliances shown have not been tested and no guarantee as to their operability or efficiency can be given.  
Made with Metropix ©2023

