



### 21 Protea Way Jordan Springs NSW

3  2  2 

Meticulously maintained and dressed in a modern facade is a home that will please you at every turn. The first home buyer, investor, or astute down sizer should take a keen interest in this opportunity.

- + Caters for a range of social gatherings
- + Walk in robe | built in wardrobes
- + Well appointed kitchen with island bench
- + Pet | child friendly grassed yard
- + Integrated pet access door
- + Approx 200m to 'Boronia Park' | Children's play ground
- + Approx 1,100m to Woolworths | shopping centre
- + Approx 1,700m to Northern Road

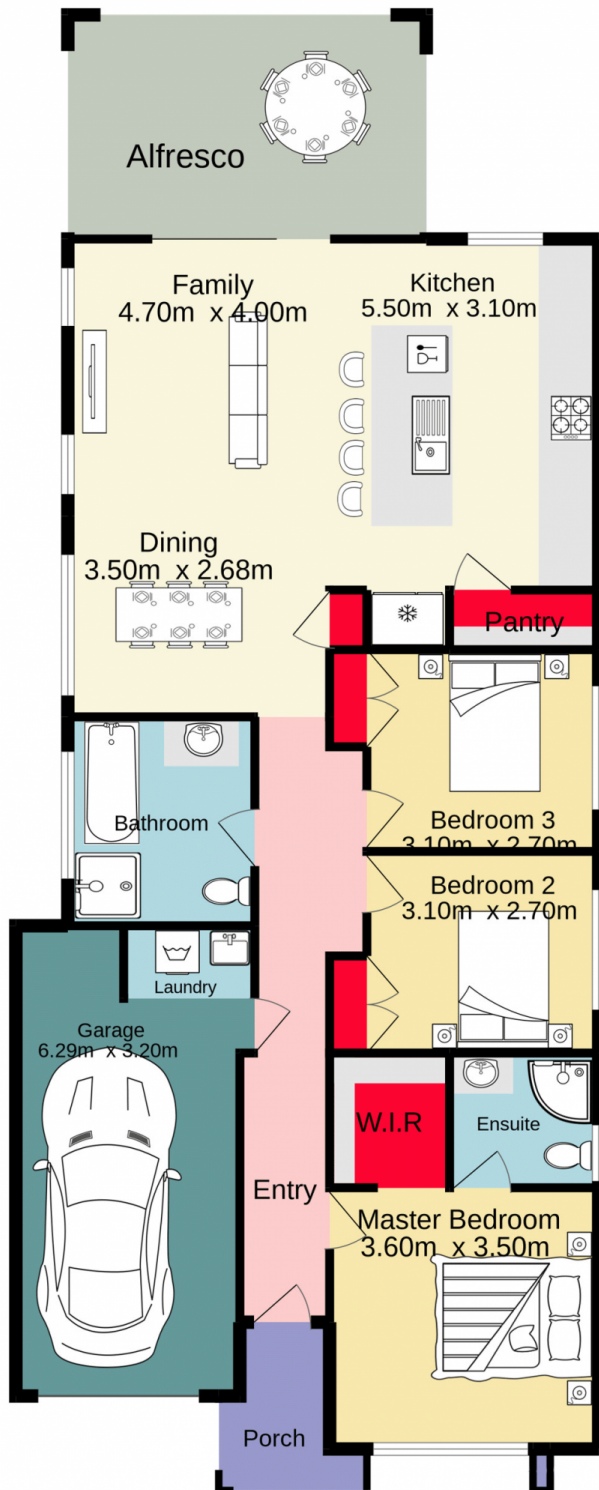
You can inspect our properties at both open homes and by

[For full version visit the website](https://www.aitkenre.com.au)

**Type** : House  
**Land Size** : 300 sqm  
**View** : <https://www.aitkenre.com.au/8058690>



**David Reeves**  
**02 4735 2121**



Whilst every attempt has been made to ensure the accuracy of the floorplan contained here, measurements of doors, windows, rooms and any other items are approximate and no responsibility is taken for any error, omission or mis-statement. This plan is for illustrative purposes only and should be used as such by any prospective purchaser. The services, systems and appliances shown have not been tested and no guarantee as to their operability or efficiency can be given.  
Made with Metropix ©2022