



48 Wedmore Road Emu Heights NSW

5 🛏 2 🚿 4 🚗

This expansive home will cater for those needing space to s-t-r-e-t-c-h out. The floor plan can accommodate a variety of configurations that can adapt to your families changing needs.

- + Large downstairs rumpus room
- + The comfort of ducted air conditioning
- + Built in wardrobes
- + Private position
- + Nestled at the foot of the Blue Mountains
- + Family friendly location
- + Moments from schools, shops & transport

You can inspect our properties at both open homes and by appointment and of course, bring your partner and family

Type : House
Price : \$ 1,020,000
Land Size : 629 sqm
View : <https://www.aitkenre.com.au/8058672>



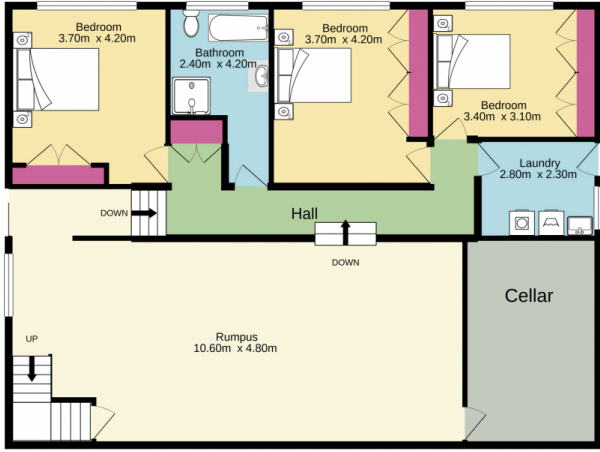
Andrew Lia
02 4735 2121



David Reeves
02 4735 2121

[For full version visit the website](https://www.aitkenre.com.au)

Lower floor



Entrance floor



Whilst every attempt has been made to ensure the accuracy of the floorplan contained here, measurements of doors, windows, rooms and any other items are approximate and no responsibility is taken for any error, omission or mis-statement. This plan is for illustrative purposes only and should be used as such by any prospective purchaser. The services, systems and appliances shown have not been tested and no guarantee as to their operability or efficiency can be given.
 Made with Metropix ©2020

