




28 Macartney Crescent Hebersham NSW

3  1  4 

An unassuming residence is waiting for you to unlock its hidden potential. Positioned within a short distance to local schools, shops and public transport is a home that offers more size than can be seen from the street. Enjoying a choice of living zones and plenty of scope to add your own touch in modernising the home, this is a property that deserves your attention.

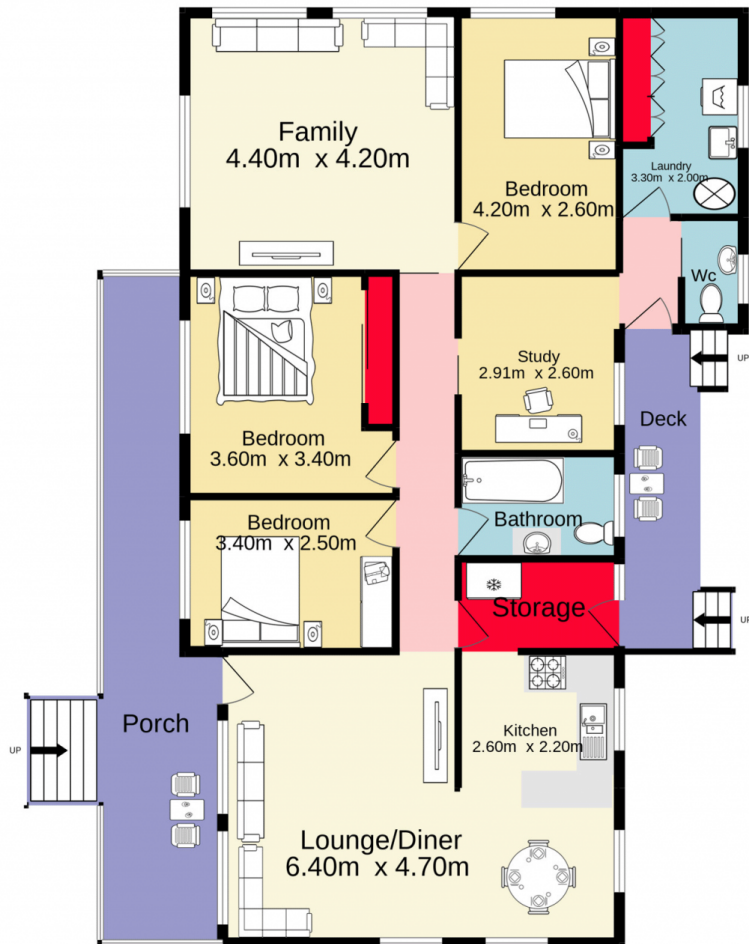
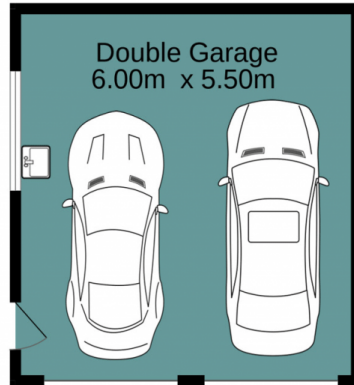
- + Freshly painted throughout
- + Freshly carpeted throughout
- + Ceiling fans to living zones and master bedroom
- + Internal laundry
- + Side access
- + Detached double garage
- + Convenient location

Type : House
Price : \$ 680,000
Land Size : 665 sqm
View : <https://www.aitkenre.com.au/8058670>



Dillon Blundell
02 4732 5055

[For full version visit the website](https://www.aitkenre.com.au)



Jim Aitken
+ Partners



TOTAL FLOOR AREA : 145.4 sq.m. approx.

Whilst every attempt has been made to ensure the accuracy of the floorplan contained here, measurements of doors, windows, rooms and any other items are approximate and no responsibility is taken for any error, omission or mis-statement. This plan is for illustrative purposes only and should be used as such by any prospective purchaser. The services, systems and appliances shown have not been tested and no guarantee as to their operability or efficiency can be given.

Made with Metropix ©2022