



57 Yodalla Avenue Emu Plains NSW

4  1  2 

Position perfect this is a great opportunity to secure a family residence in a sought after part of town. Perfect for the savvy investor or astute owner occupier, the growing family will love the size on offer.

- + Versatile floor plan
- + Optional utility room | garage
- + Glorious covered alfresco space
- + Family | pet friendly backyard
- + Currently tenanted
- + Approx 300m walk to Nepean River
- + Approx 700m to Woolworths | Aldi

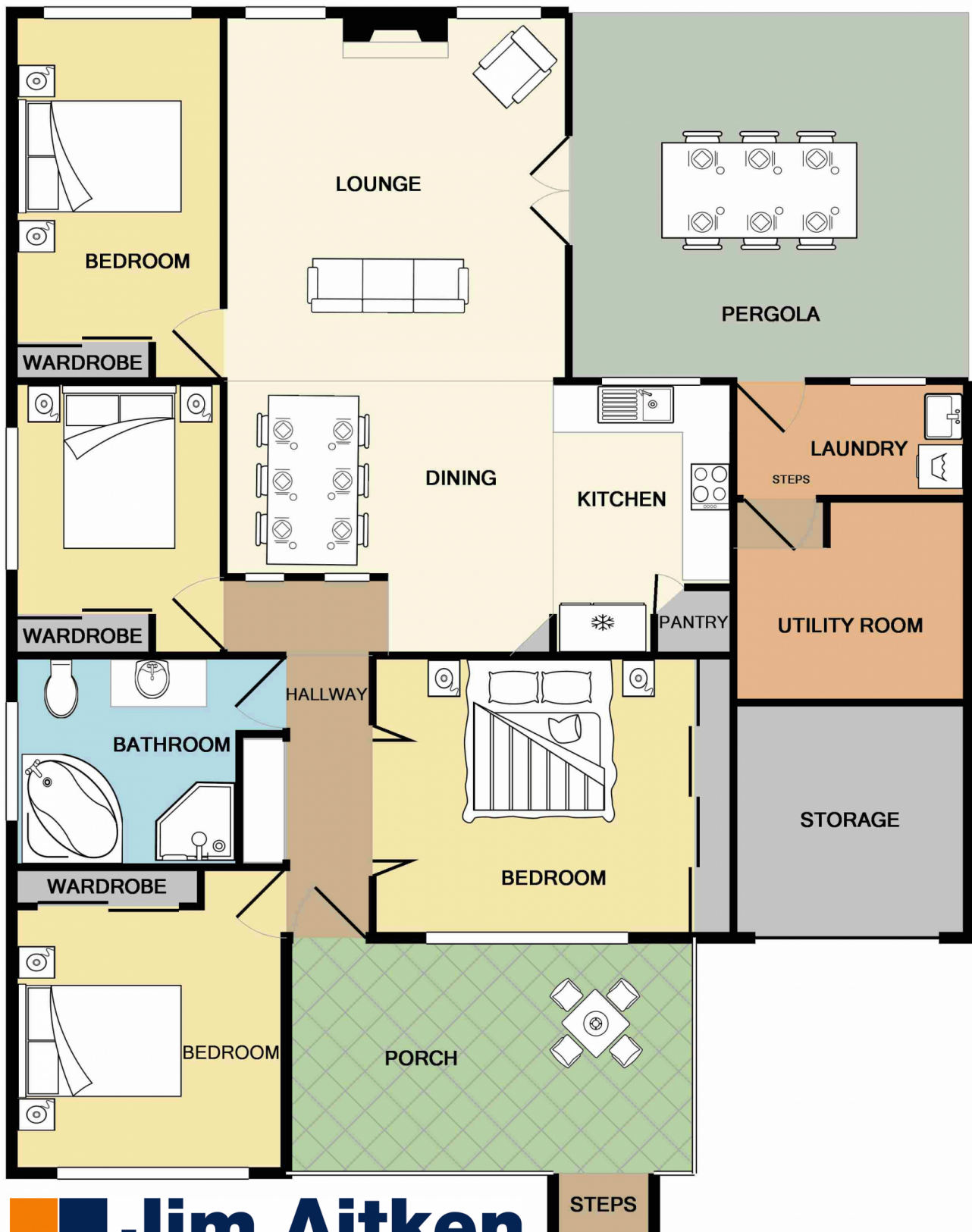
We are excited to announce that you can inspect our properties at both open homes and by appointment. You

Type : House
Price : \$ 1,070,000
Land Size : 556 sqm
View : <https://www.aitkenre.com.au/8058660>



Andrew Lia
02 4735 2121

[For full version visit the website](https://www.aitkenre.com.au)



Whilst every attempt has been made to ensure the accuracy of the floor plan contained here, measurements of doors, windows, rooms and any other items are approximate and no responsibility is taken for any error, omission, or mis-statement. This plan is for illustrative purposes only and should be used as such by any prospective purchaser. The services, systems and appliances shown have not been tested and no guarantee as to their operability or efficiency can be given
Made with Metropix ©2018