

193 Victoria Street Cambridge Park NSW

4 1

Roll up your sleeves, call in some favours and turn this house into your home. Ready for rejuvenation you will love the opportunity to oversee the exciting transformation.

- + Built in wardrobes
- + Updated kitchen
- + Genuine timber floorboards
- + Large grassed backyard
- + Generous side access

- + Approx 500m to train station
- + Approx 400m to primary school
- + Approx 1200m to Hospital | Medical precinct

DISCLAIMER: Whilst we deem this information to be

Type : House
Price : \$ 601,000
Land Size : 776 sqm
View : <https://www.aitkenre.com.au/8058638>

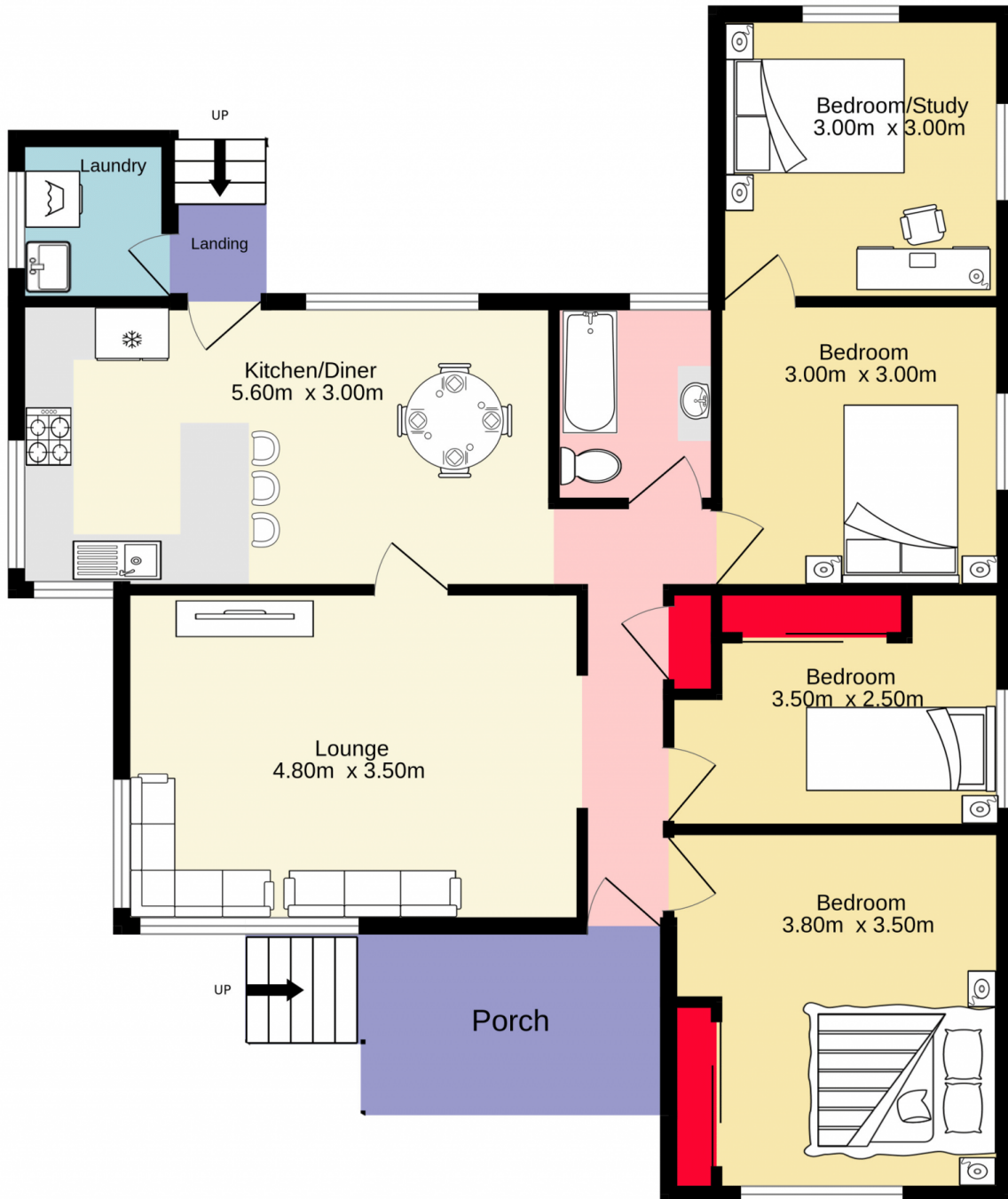


David Reeves
02 4735 2121



Andrew Lia
02 4735 2121

[For full version visit the website](https://www.aitkenre.com.au)



TOTAL FLOOR AREA : 84.6 sq.m. approx.

Whilst every attempt has been made to ensure the accuracy of the floorplan contained here, measurements of doors, windows, rooms and any other items are approximate and no responsibility is taken for any error, omission or mis-statement. This plan is for illustrative purposes only and should be used as such by any prospective purchaser. The services, systems and appliances shown have not been tested and no guarantee as to their operability or efficiency can be given.
 Made with Metropix ©2022