



### 13 Cleeve Place Cambridge Gardens NSW

3  1  6 

Whether you're a first home buyer, an astute investor or are simply looking to downsize, this home deserves your immediate attention! Nestled at the end of a no through road and occupying an expansive parcel of land, this home contains many features that are sure to make for a comfortable living environment.

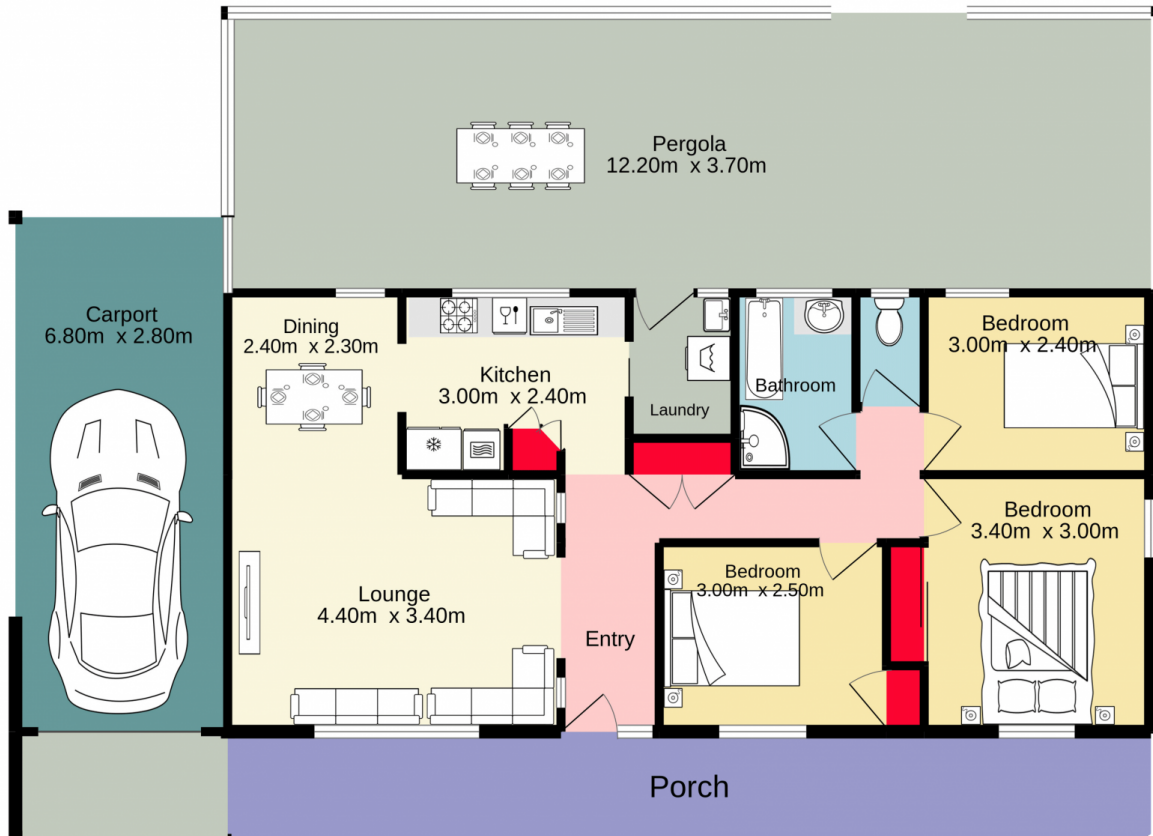
- + Split system air conditioning
- + Genuine timber floors
- + Built in robes to two bedrooms
- + Large alfresco zone
- + Family | pet friendly yard
- + Family friendly suburb
- + Returning \$520.00 per week (from 3rd January 2023)

**Type** : House  
**Price** : \$ 750,000  
**Land Size** : 651 sqm  
**View** : <https://www.aitkenre.com.au/8058628>



**Andrew Lia**  
**02 4735 2121**

[For full version visit the website](https://www.aitkenre.com.au)



TOTAL FLOOR AREA: 138.9 sq.m. approx.

Whilst every attempt has been made to ensure the accuracy of the floorplan contained here, measurements of doors, windows, rooms and any other items are approximate and no responsibility is taken for any error, omission or mis-statement. This plan is for illustrative purposes only and should be used as such by any prospective purchaser. The services, systems and appliances shown have not been tested and no guarantee as to their operability or efficiency can be given.  
 Made with Metropix ©2022