



96 Bringelly Road Kingswood NSW

3  2  4 

Ideally positioned close to what counts, this handy location offers easy access to schools, shops and Penrith's busy CBD. The kitchen and bathrooms are in good order, there is split system air conditioning and a large enclosed sunroom.

- + Close to schools & shops
- + Enclosed entertaining space
- + Concrete in ground pool
- + Child | pet friendly backyard
- + Currently returning tenanted

- + Walking distance to High School
- + 1500m (approx) to Train Station
- + 1400m (approx) to Nepean Hospital

Type : House
Price : \$ 750,000
Land Size : 693 sqm
View : <https://www.aitkenre.com.au/8058626>

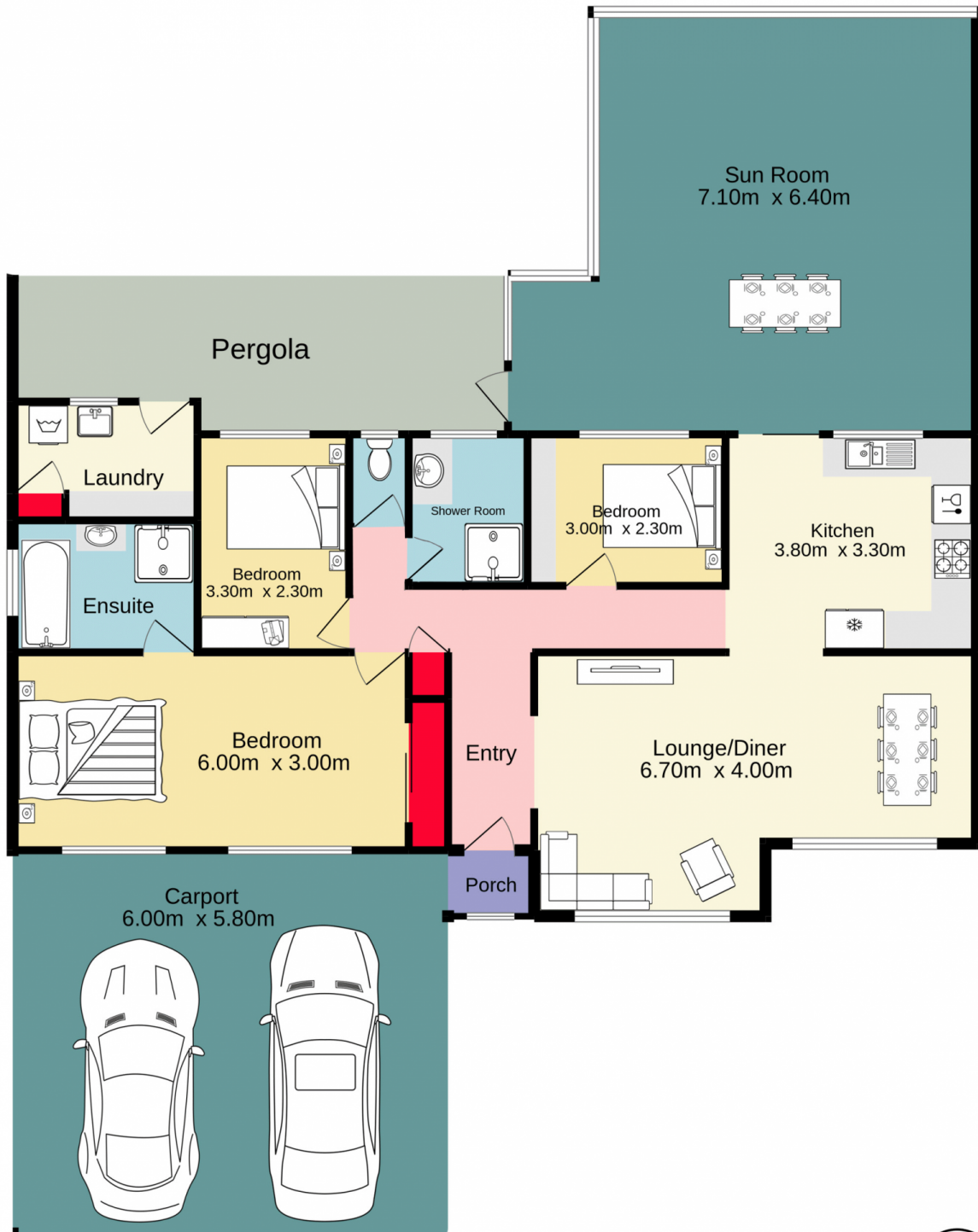


David Reeves
02 4735 2121



Richard Stewart
02 4735 2121

[For full version visit the website](https://www.aitkenre.com.au)



Jim Aitken
Partners



TOTAL FLOOR AREA : 191.6 sq.m. approx.

Whilst every attempt has been made to ensure the accuracy of the floorplan contained here, measurements of doors, windows, rooms and any other items are approximate and no responsibility is taken for any error, omission or mis-statement. This plan is for illustrative purposes only and should be used as such by any prospective purchaser. The services, systems and appliances shown have not been tested and no guarantee as to their operability or efficiency can be given.

Made with Metropix ©2022