






8 Sylvan Place Leonay NSW

4  3  4 

Enjoying a commanding street presence, this superbly preserved and well crafted home will serve a new family for many decades to come. The warmth of timber can be felt across both levels and is complimented by generous proportions.

- + Full of traditional classic charm
- + Suspended slab | full brick construction
- + Terracotta roof tiles | solar panels
- + The comfort of ducted and split system A/C
- + Various entertaining spaces
- + Cul de sac location
- + Spectacular views towards Nepean River

We are excited to announce that you can now inspect our

[For full version visit the website](https://www.aitkenre.com.au)

Type : House
Price : \$ 1,280,000
Land Size : 878 sqm
View : <https://www.aitkenre.com.au/8058607>



David Reeves
02 4735 2121

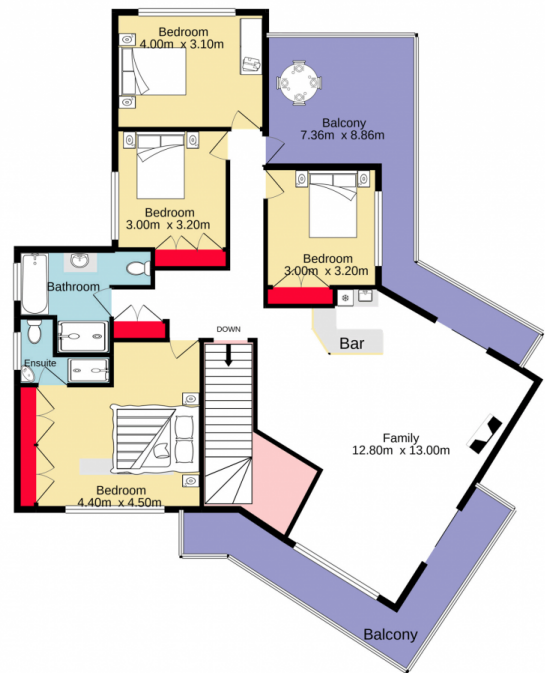


Andrew Lia
02 4735 2121

Ground floor
140.7 sq.m. approx.



First floor
121.6 sq.m. approx.



TOTAL FLOOR AREA : 262.3 sq.m. approx.

Whilst every attempt has been made to ensure the accuracy of the floorplan contained here, measurements of doors, windows, rooms and any other items are approximate and no responsibility is taken for any error, omission or mis-statement. This plan is for illustrative purposes only and should be used as such by any prospective purchaser. The services, systems and appliances shown have not been tested and no guarantee as to their operability or efficiency can be given.
Made with Metropix ©2021

