



**2 Alma Crescent Emu Heights NSW**

4 🚗 2 🚚 4 🚗

Nestled in a whisper quiet cul-de sac, this rejuvenated residence showcases a collection of features that will make you the envy of your friends. Resting on an expansive family friendly parcel of land, this home and lifestyle package needs to be seen to be appreciated.

- + Approx 200m from the Nepean River
- + Large updated cooking quarters
- + Stunning bathroom and ensuite
- + Elevated & enclosed entertaining space
- + Expansive alfresco zone
- + Large utility space downstairs
- + Over size garaging with workshop space

We are excited to announce that you can now inspect our

[For full version visit the website](https://www.aitkenre.com.au/8058605)

**Type** : House  
**Land Size** : 819 sqm  
**View** : <https://www.aitkenre.com.au/8058605>

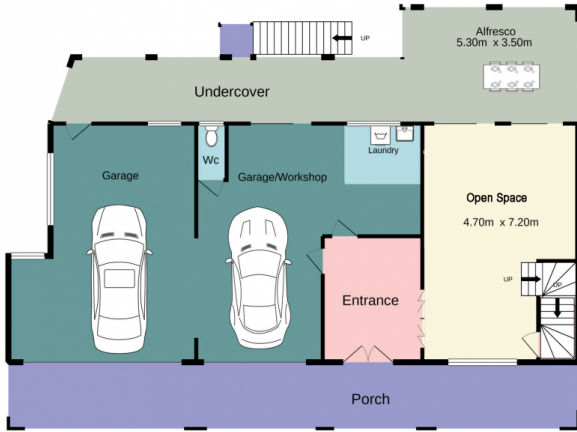


**Andrew Lia**  
02 4735 2121

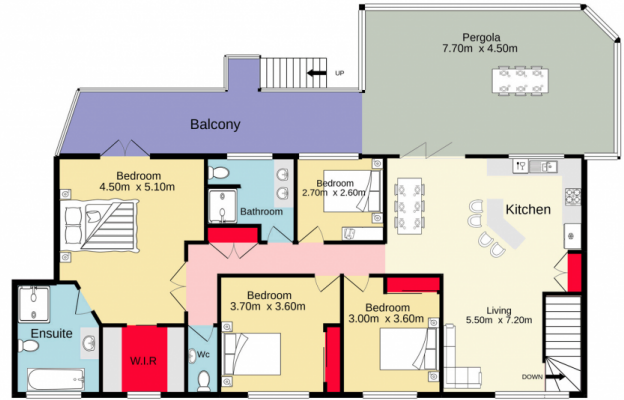


**Dillon Blundell**  
02 4732 5055

Ground floor  
157.6 sq.m. approx.



First floor  
152.8 sq.m. approx.



TOTAL FLOOR AREA : 310.4 sq.m. approx.

Whilst every attempt has been made to ensure the accuracy of the floorplan contained here, measurements of doors, windows, rooms and any other items are approximate and no responsibility is taken for any error, omission or mis-statement. This plan is for illustrative purposes only and should be used as such by any prospective purchaser. The services, systems and appliances shown have not been tested and no guarantee as to their operability or efficiency can be given.  
Made with Metropix ©2021

