



10/193 Derby Street Penrith NSW

2 1 2

You'll feel like you're the centre of attention residing in this centrally located unit.

- + 1,100m to Train Station (Approx)
- + 1,200m to Westfield Shops (approx)
- + 1,200m to Nepean Hospital (approx)
- + 800m to Jamison Park (approx)
- + Council Rates: \$412.05pq (approx)
- + Strata Fees: \$684.05pq (approx)

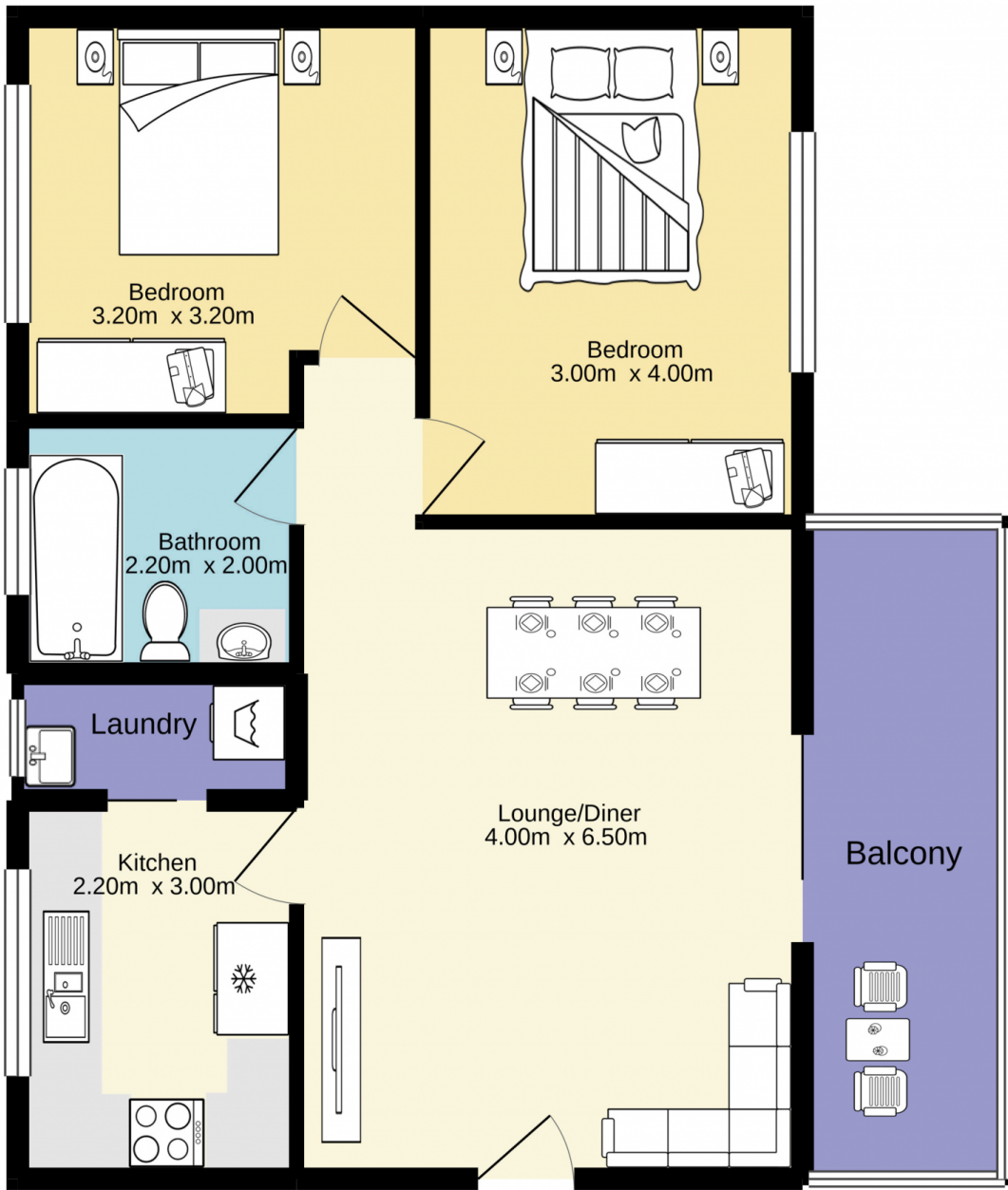
Type : Unit
Price : \$ 352,000
View : <https://www.aitkenre.com.au/8058586>

Restrictions have been reimposed by the State Government that require inspections to be by appointment only. Properties may now only be shown to ONE person at a time and unfortunately we cannot allow persons to gather at the front of the property.



Andrew Lia
02 4735 2121

[For full version visit the website](https://www.aitkenre.com.au)




Jim Aitken Partners

Whilst every attempt has been made to ensure the accuracy of the floorplan contained here, measurements of doors, windows, rooms and any other items are approximate and no responsibility is taken for any error, omission or mis-statement. This plan is for illustrative purposes only and should be used as such by any prospective purchaser. The services, systems and appliances shown have not been tested and no guarantee as to their operability or efficiency can be given.
Made with Metropix ©2021