






## 6 Workman Place Leonay NSW

4  2  6 

The fresh and modern ambiance flows from the meticulously maintained street-scape through to the internal finishes. Think a little harder and look a little deeper at how this family home can meet your needs - now and into the future. The floor plan offers comfortable living options for the family to stretch out as their need for space grows.

- + Blue ribbon location
- + Manicured gardens
- + Renovated kitchen | bathroom
- + Air conditioning throughout
- + LED lighting | ceiling fans
- + Tiled | timber flooring
- + Cul de sac location

**Type** : House  
**Price** : \$ 1,175,000  
**Land Size** : 744 sqm  
**View** : <https://www.aitkenre.com.au/8058585>



**David Reeves**  
02 4735 2121

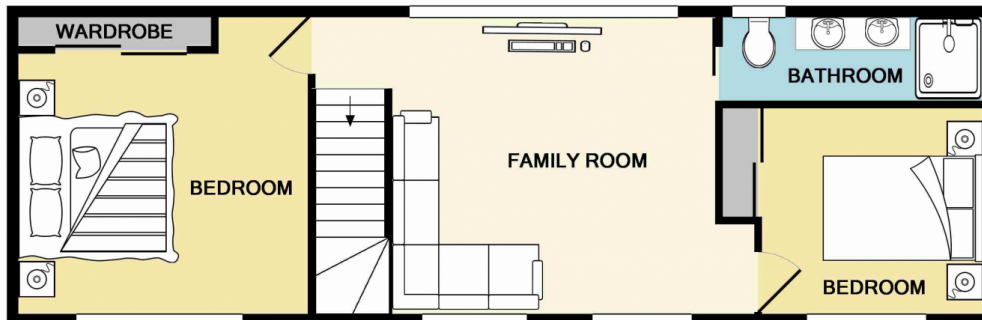


**Dillon Blundell**  
02 4732 5055

[For full version visit the website](https://www.aitkenre.com.au)



GROUND FLOOR



1ST FLOOR



**Jim Aitken**  
+ Partners

Whilst every attempt has been made to ensure the accuracy of the floor plan contained here, measurements of doors, windows, rooms and any other items are approximate and no responsibility is taken for any error, omission, or mis-statement. This plan is for illustrative purposes only and should be used as such by any prospective purchaser. The services, systems and appliances shown have not been tested and no guarantee as to their operability or efficiency can be given  
Made with Metropix ©2018