



## 21 Gosling Street Emu Heights NSW

5  3  2 

A modern day masterpiece that blends huge proportions with the warmth of timber throughout. High end finishes highlight the cost invested in completing this huge residence.

- + Commanding street presence
- + Extensive use of timber finishes
- + Oversize bedrooms with multiple walk in robes
- + Master suite with parents retreat
- + Generous servings of living space
- + Double ovens | double gas cook tops
- + Landscaped gardens | sandstone retaining

We are excited to announce that you can inspect our properties at both open homes and by appointment. You

[For full version visit the website](https://www.aitkenre.com.au/8058580)

**Type** : House  
**Price** : \$ 1,295,000  
**Land Size** : 568 sqm  
**View** : <https://www.aitkenre.com.au/8058580>



**David Reeves**  
02 4735 2121

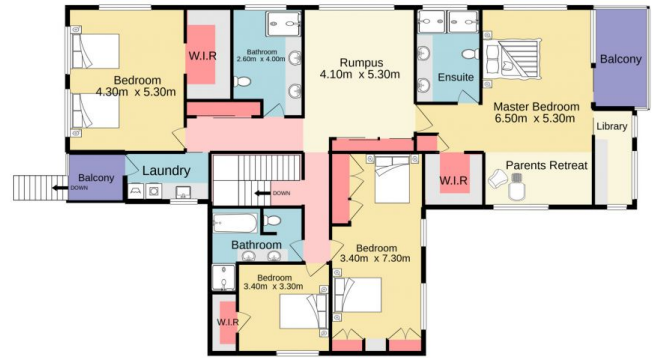


**Diego Benitez**  
02 4733 6999

Ground floor  
250.1 sq.m. approx.



1st floor  
182.6 sq.m. approx.



TOTAL FLOOR AREA : 432.7 sq.m. approx.

Whilst every attempt has been made to ensure the accuracy of the floorplan contained here, measurements of doors, windows, rooms and any other items are approximate and no responsibility is taken for any error, omission or mis-statement. This plan is for illustrative purposes only and should be used as such by any prospective purchaser. The services, systems and appliances shown have not been tested and no guarantee as to their operability or efficiency can be given.  
Made with Metropix ©2021

