



5 Rivertop Close Emu Heights NSW

6  4  16 

Stretching across an expansive multi level design, this modern day masterpiece is hidden in the exclusive 'Riverside Gardens' estate. Generously proportioned and custom-built to perfection, this a spectacular fusion of design and quality complimented by contemporary architecture. There is extensive indoor and outdoor entertainment areas that includes the dedicated home cinema room and mineral plunge pool. This state of the art home truly deserves your own private viewing to appreciate this expertly crafted abode.

- + Soaring ceilings and the extensive use of glass
- + Generous servings of formal & informal living zones
- + Two master bedrooms with ensuite bathrooms
- + Sleek cooking quarters with six meter bench top | servery

Type : House
Land Size : 5337 sqm
View : <https://www.aitkenre.com.au/8058566>



David Reeves
 02 4735 2121

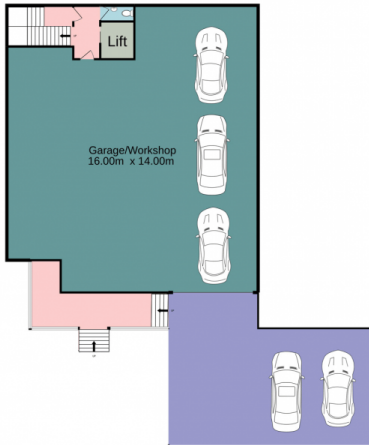


Andrew Lia
 02 4735 2121

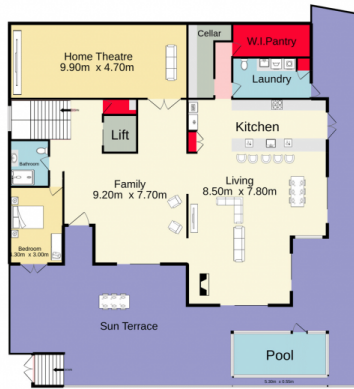
[For full version visit the website](https://www.aitkenre.com.au)

<https://www.aitkenre.com.au>

Ground floor
239.3 sq.m. approx.



1st floor
255.5 sq.m. approx.



2nd floor
249.0 sq.m. approx.



TOTAL FLOOR AREA: 743.7 sq.m. approx.

Whilst every attempt has been made to ensure the accuracy of the floorplan contained here, measurements of doors, windows, rooms and any other items are approximate and no responsibility is taken for any error, omission or mis-statement. This plan is for illustrative purposes only and should be used as such by any prospective purchaser. The services, systems and appliances shown have not been tested and no guarantee as to their operability or efficiency can be given.
Made with Metropix ©2022

