



2/32-34 George Street Kingswood NSW

3  2  4 

Entry level enjoys an open style lounge | dining zone and the convenience of a downstairs bedroom and bathroom. The second floor contains an additional two bedrooms along with a second bathroom. The convenient location means your share the suburb with the University of Western Sydney, Train Station and Nepean Hospital.

- + Free standing townhouse
- + Complex of just 5
- + Spacious common areas
- + Split System Air conditioning
- + Large alfresco area
- + Meticulously maintained
- + Strata: \$445.00 pq (approx)

Type : Townhouse

Price : \$ 530,000

View : <https://www.aitkenre.com.au/8058551>



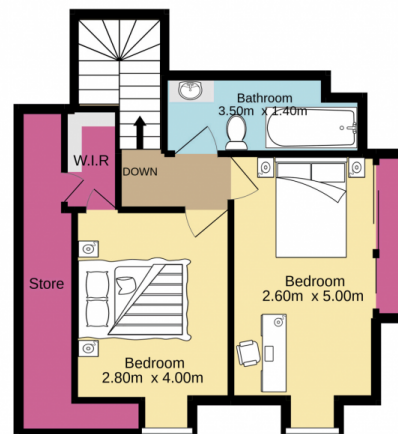
Andrew Lia
02 4735 2121

[For full version visit the website](https://www.aitkenre.com.au)

Ground floor
109.1 sq.m. approx.



1st floor
41.5 sq.m. approx.



TOTAL FLOOR AREA : 150.6 sq.m. approx.

Whilst every attempt has been made to ensure the accuracy of the floorplan contained here, measurements of doors, windows, rooms and any other items are approximate and no responsibility is taken for any error, omission or mis-statement. This plan is for illustrative purposes only and should be used as such by any prospective purchaser. The services, systems and appliances shown have not been tested and no guarantee as to their operability or efficiency can be given.

Made with Metropix ©2021

