



57 Westbank Avenue Emu Plains NSW

3  1  2 

Positioned perfectly just moments from the banks of Nepean river is a blank canvas that will have your imagination running wild! The traditional brick and tile residence rests on an enviable sized corner block that offers wide access to the rear yard.

- + Popular corner block position
- + Ceiling fans
- + Moments from local convenience stores
- + Enclosed sunroom
- + Polished timber floors
- + Approx 200m to Nepean River

Restrictions have been reimposed by the State Government that require inspections to be by appointment

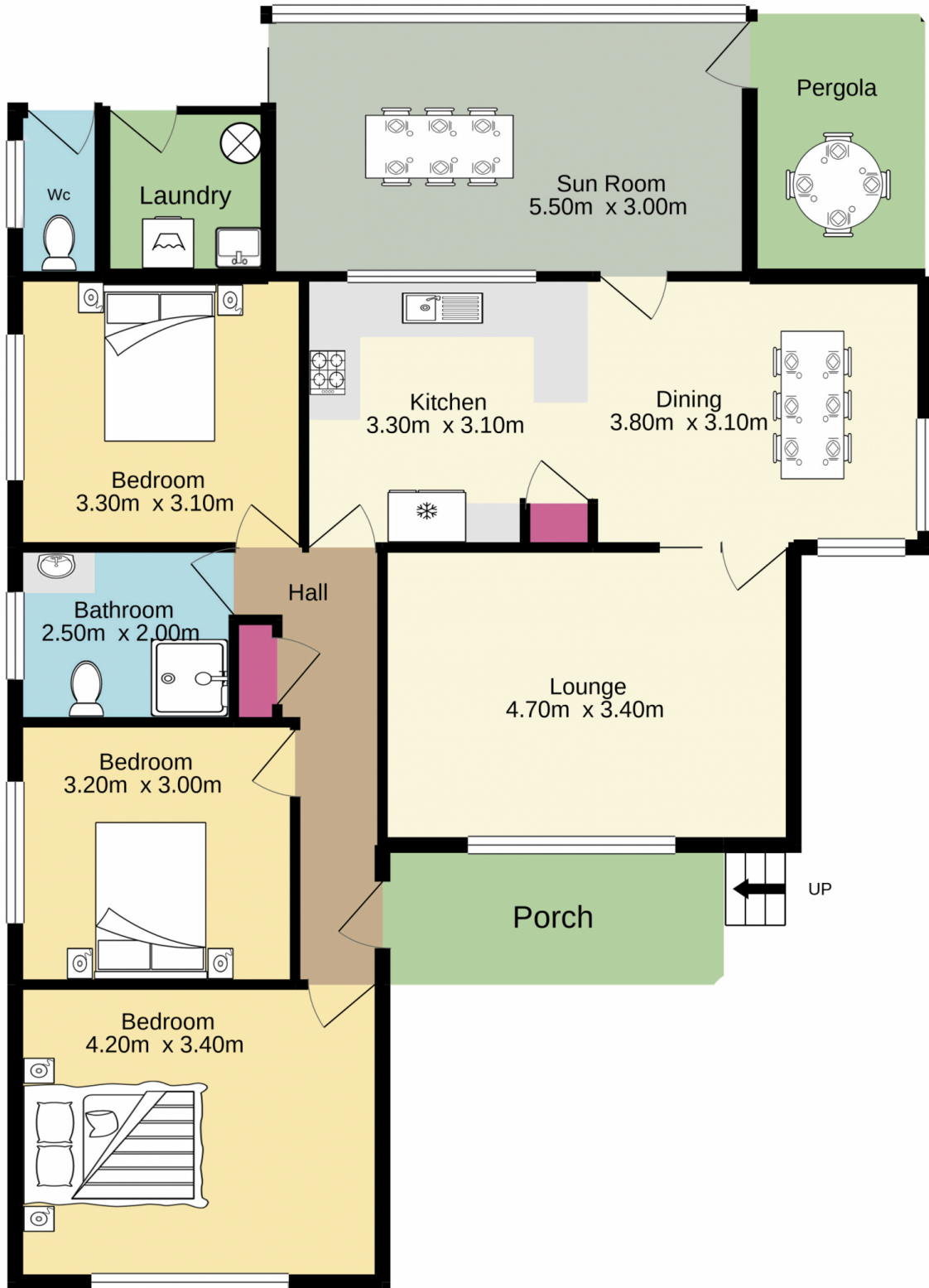
[For full version visit the website](https://www.aitkenre.com.au/8058541)

Type : House
Land Size : 695 sqm
View : <https://www.aitkenre.com.au/8058541>



David Reeves
02 4735 2121

Ground floor
207 m. approx.



Jim Aitken
+
Partners

TOTAL FLOOR AREA : 101.9 sq.m. approx.

Whilst every attempt has been made to ensure the accuracy of the floorplan contained here, measurements of doors, windows, rooms and any other items are approximate and no responsibility is taken for any error, omission or mis-statement. This plan is for illustrative purposes only and should be used as such by any prospective purchaser. The services, systems and appliances shown have not been tested and no guarantee as to their operability or efficiency can be given.
Made with Metropix ©2021