



14 Crawford Street Emu Plains NSW

3  1  4 

Position perfect and nestled in a cul de sac location, this glorious home will suit the excited first home buyer or astute investor.

- + Side access to rear yard
- + Modern kitchen | stainless steel appliances
- + Split system A/C | ceiling fans
- + Built in wardrobe to main
- + Established gardens
- + Internal laundry
- + Easy access to Motorway

Recently the NSW State Government announced the ban on open homes and auctions has been lifted. With certain guidelines still in place we must ensure safety measures

Type : House
Price : \$ 800,000
Land Size : 650 sqm
View : <https://www.aitkenre.com.au/8058518>

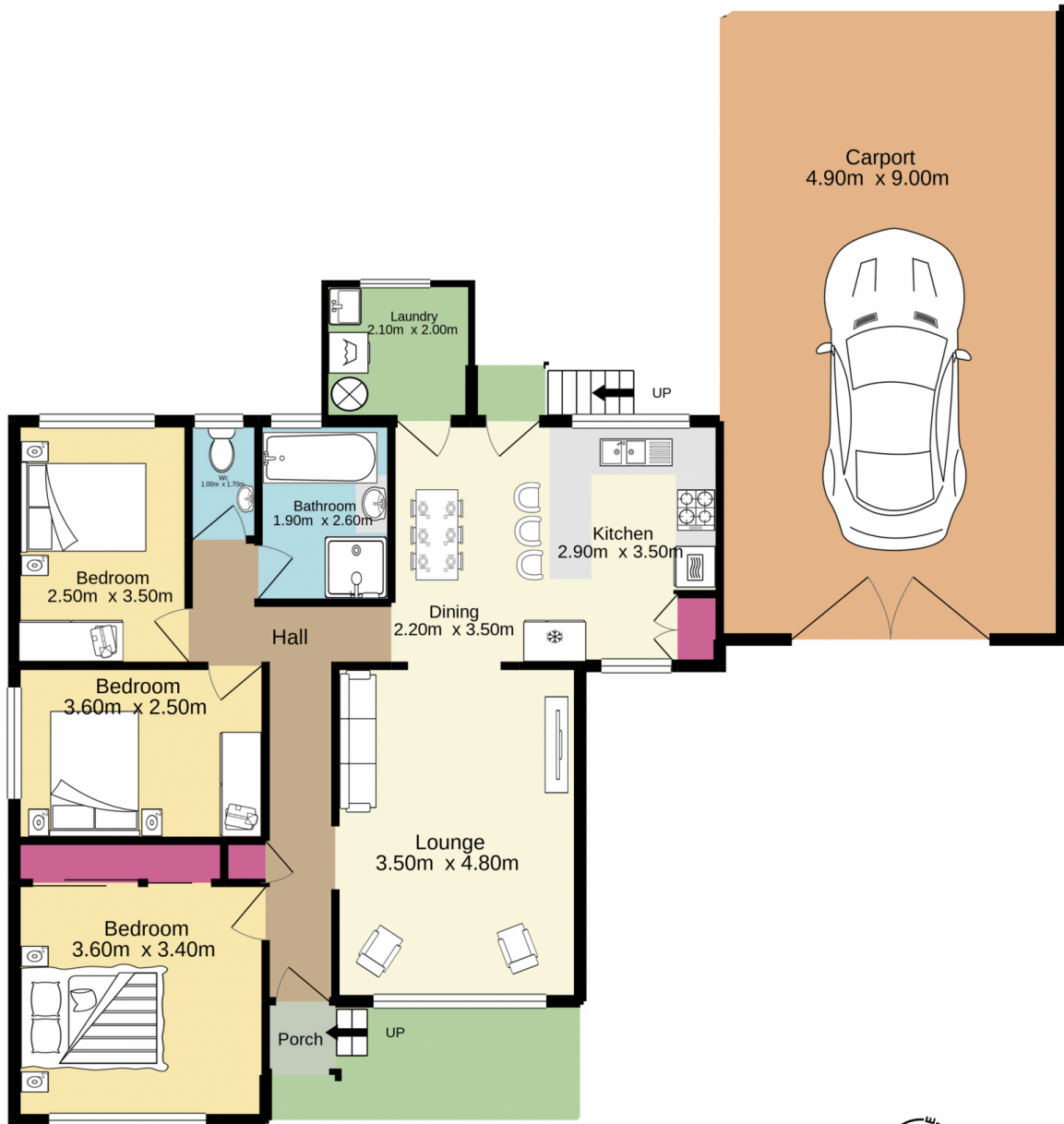


Andrew Lia
02 4735 2121



Dillon Blundell
02 4732 5055

[For full version visit the website](https://www.aitkenre.com.au)



TOTAL FLOOR AREA : 125.5 sq.m. approx.

Whilst every attempt has been made to ensure the accuracy of the floorplan contained here, measurements of doors, windows, rooms and any other items are approximate and no responsibility is taken for any error, omission or mis-statement. This plan is for illustrative purposes only and should be used as such by any prospective purchaser. The services, systems and appliances shown have not been tested and no guarantee as to their operability or efficiency can be given.
Made with Metropix ©2021