



26 Hillview Avenue South Penrith NSW

4  1 

Position perfect and enjoying easy access to local schools, sporting fields and Southlands Shopping Centre. Beyond the traditional facade the home will appeal to first home owners and investors alike.

- + Ducted air conditioning
- + Heated floors
- + Plantation shutters
- + Modern kitchen | bathroom
- + Optional 4th bedroom | hobby room
- + Alfresco entertaining space
- + Pet | child friendly backyard

Recently the NSW State Government announced the ban on open homes and auctions has been lifted. With certain

Type : House
Price : \$ 737,000
Land Size : 645 sqm
View : <https://www.aitkenre.com.au/8058462>

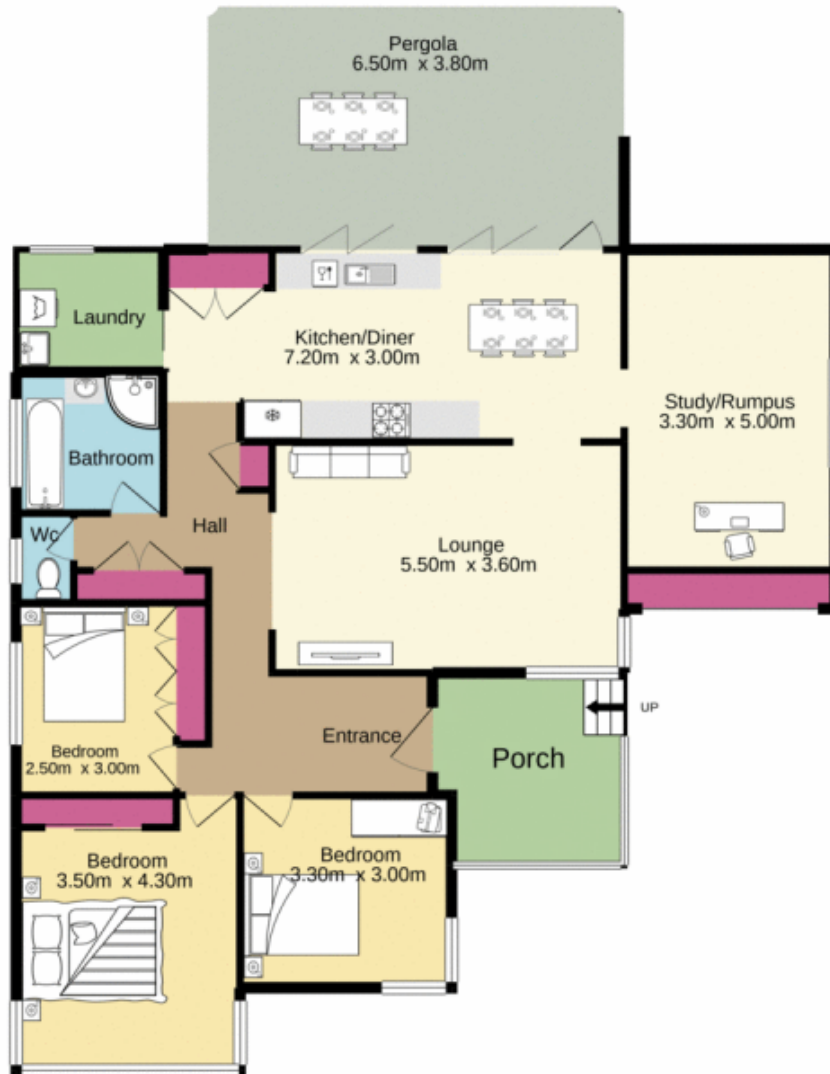


David Reeves
 02 4735 2121



Richard Stewart
 02 4735 2121

[For full version visit the website](https://www.aitkenre.com.au)



Jim Aitken
+ Partners

TOTAL FLOOR AREA : 138.9 sq.m. approx.

Whilst every attempt has been made to ensure the accuracy of the floorplan contained here, measurements of doors, windows, rooms and any other items are approximate and no responsibility is taken for any error, omission or mis-statement. This plan is for illustrative purposes only and should be used as such by any prospective purchaser. The services, systems and appliances shown have not been tested and no guarantee as to their operability or efficiency can be given.
Made with Metropix ©2023