



103 River Road Emu Plains NSW

5  4  4 

Embrace the scenic river views as you travel home along this prestigious stretch of road. Occupying over 900 sqm of prime land, this stunning residence is set among some of the areas finest. Social gatherings can be hosted under the alfresco dining or casually enjoyed in the surrounds of the in ground pool. Expansive proportions throughout ensure you will be able to provide your family the enviable lifestyle they deserve.

Located approximately fifty eight kilometres from Sydney and positioned on the western side of the prestigious Nepean River. This popular suburb accommodated numerous schools, parks and offers easy access to public transport and the motorway.

Type : House
Land Size : 923 sqm
View : <https://www.aitkenre.com.au/8058427>



David Reeves
02 4735 2121



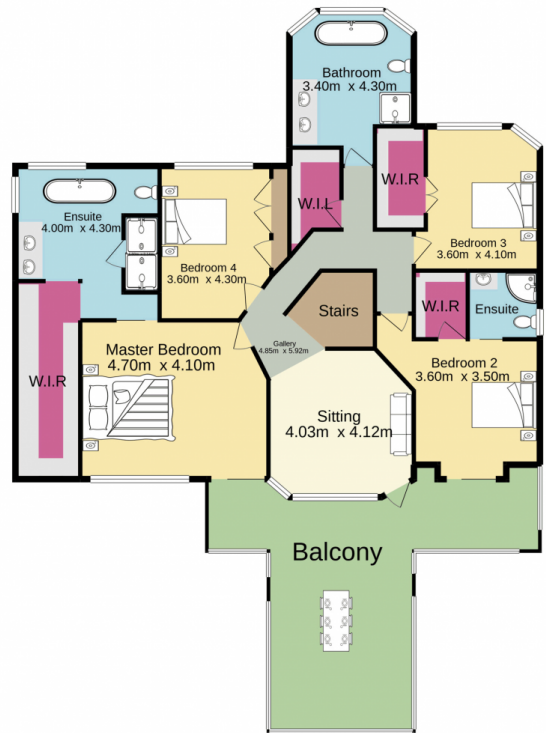
Andrew Lia
02 4735 2121

[For full version visit the website](https://www.aitkenre.com.au)

Ground floor
252.7 sq.m. approx.



1st floor
145.5 sq.m. approx.



TOTAL FLOOR AREA : 398.2 sq.m. approx.

Whilst every attempt has been made to ensure the accuracy of the floorplan contained here, measurements of doors, windows, rooms and any other items are approximate and no responsibility is taken for any error, omission or mis-statement. This plan is for illustrative purposes only and should be used as such by any prospective purchaser. The services, systems and appliances shown have not been tested and no guarantee as to their operability or efficiency can be given.
Made with Metropix ©2021