



**20 Reserve Avenue Blaxland NSW**

3  2  2 

On your marks... get set.... GO!  
 Don't delay booking a time to see this glorious mountains home. Pretty as a picture you will fall in love with the warm and inviting ambiance.

- + Meticulously presented
- + Comfort of ducted air conditioning
- + Updated kitchen | dishwasher
- + Elevated balcony overlooking pool
- + Ample under home storage
- + Ceiling fans | built in wardrobes
- + Semi above ground pool

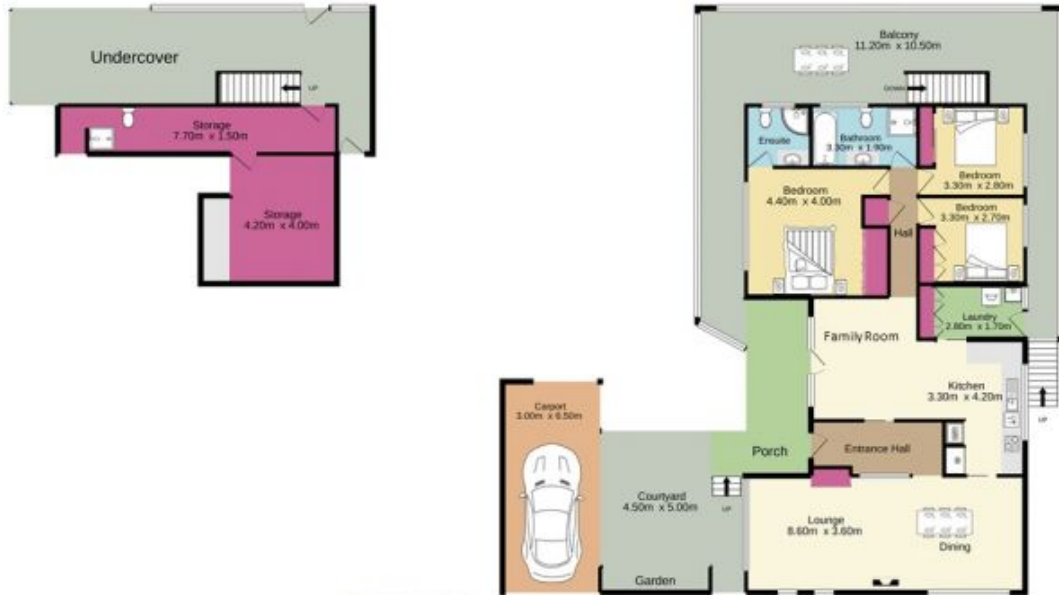
Restrictions have been reimposed by the State Government that require inspections to be by appointment

**Type** : House  
**Price** : \$ 910,000  
**Land Size** : 746 sqm  
**View** : <https://www.aitkenre.com.au/8058424>



**David Reeves**  
 02 4735 2121

[For full version visit the website](https://www.aitkenre.com.au)



**Jim Aitken**  
Partners

TOTAL FLOOR AREA: 269.4 sq.m. approx.

While every attempt has been made to ensure the accuracy of the description contained here, measurements of doors, windows, stairs and any other items are approximate and no responsibility is taken for any error, omission or mis-statement. This plan is for illustrative purposes only and should be used as such for any prospective purchase. The services, systems and appliances shown have not been tested and no guarantee as to their operability or efficiency can be given.  
Made with Heringer ©2021

