



108 River Road Emu Plains NSW

4 2 4

Absorb the picturesque water views as you travel home along this prestigious stretch of road. Resting on over 830sqm of prime land, this residence is set amongst some of the area's finest. Social gatherings can be hosted poolside or enjoyed from the elevated vantage point that provides a stunning vista. Stunning flooring compliments the wonderfully high ceilings and are accompanied by sections of ornate cornice work. Timber windows frame spectacular views of the Nepean River and aid in allowing natural light to filter in.

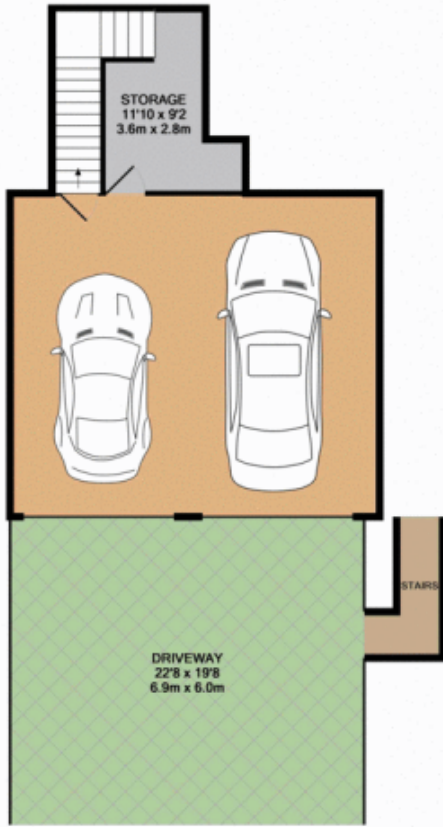
- + Executive home in exclusive location
- + Elevated position + water views
- + Ducted air conditioning throughout
- + Remote double garage + internal access

Type : House
Land Size : 835 sqm
View : <https://www.aitkenre.com.au/8058384>



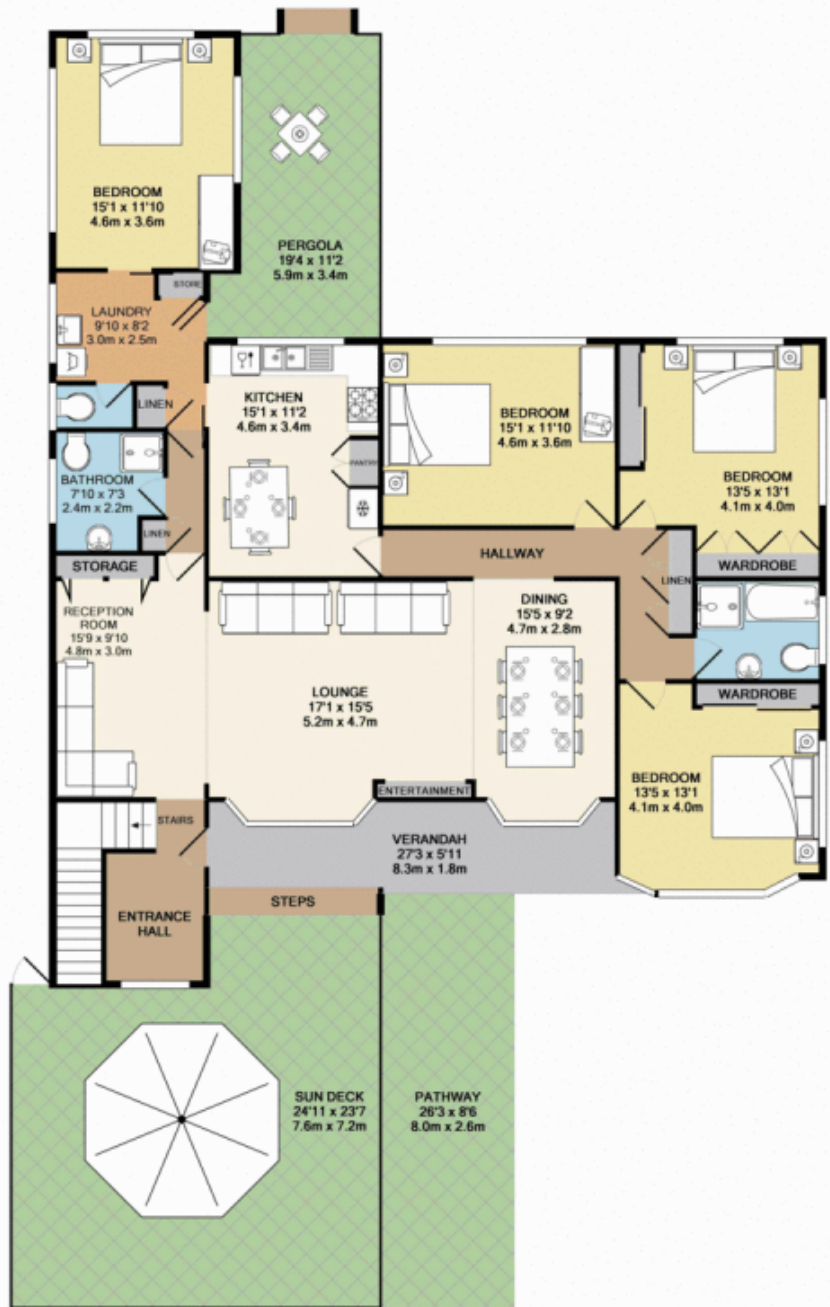
David Reeves
02 4735 2121

[For full version visit the website](https://www.aitkenre.com.au)



GROUND FLOOR

Whilst every attempt has been made to ensure the accuracy of the floor plan contained here, measurements of doors, windows, rooms and any other items are approximate and no responsibility is taken for any error, omission, or mis-statement. This plan is for illustrative purposes only and should be used as such by any prospective purchaser. The services, systems and appliances shown have not been tested and no guarantee as to their operability or efficiency can be given.
Made with Metropix 02016



1ST FLOOR