



42 Greenhaven Drive Emu Heights NSW

4  2  2 

Enjoying a peaceful vista and positioned at the foot of the mountains is a family residence that showcases a selection of creature comforts. The pet and child friendly yard is accompanied by an in ground pool that can be seen from from the elevated sunroom. Internally you'll love the modern feel that's complimented by soaring ceilings with exposed beams.

- + Stunning cooking quarters
- + Downstairs recreation | hobby rooms
- + Split system air conditioning
- + Envious leafy location
- + Elevated balcony
- + Moments to public school
- + Appointments strictly by appointment

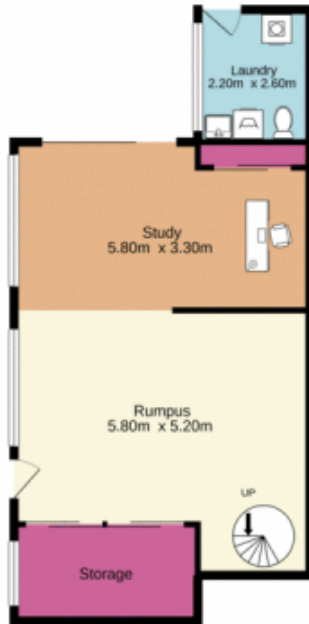
Type : House
Land Size : 670 sqm
View : <https://www.aitkenre.com.au/8058360>



David Reeves
 02 4735 2121

[For full version visit the website](https://www.aitkenre.com.au)

Basement
58.3 sq.m. approx.



Ground floor
154.8 sq.m. approx.



TOTAL FLOOR AREA : 213.0 sq.m. approx.

Whilst every attempt has been made to ensure the accuracy of the floorplan contained here, measurements of doors, windows, rooms and any other items are approximate and no responsibility is taken for any error, omission or mis-statement. This plan is for illustrative purposes only and should be used as such by any prospective purchaser. The services, systems and appliances shown have not been tested and no guarantee as to their operability or efficiency can be given.
Made with Metropix ©2021

