



6 Cascade Avenue Glenmore Park NSW

4 3 4

Stretching across an impressive split level design, this residence showcases a comfortable blend of both size and functionality. Freshened up internally, you can simply just move in and enjoy the 'Blue Hills' lifestyle.

- + The comfort of ducted air conditioning throughout
- + Alfresco entertaining zone
- + A choice of formal | informal living zones
- + Large master bedroom with ensuite and balcony
- + Ducted vacuum | alarm system
- + Fresh carpet downstairs
- + Blue ribbon location
- + Previously returning \$650.00 per week

Recently the NSW State Government announced the ban

[For full version visit the website](https://www.aitkenre.com.au)

Type : House
Land Size : 400 sqm
View : <https://www.aitkenre.com.au/8058281>

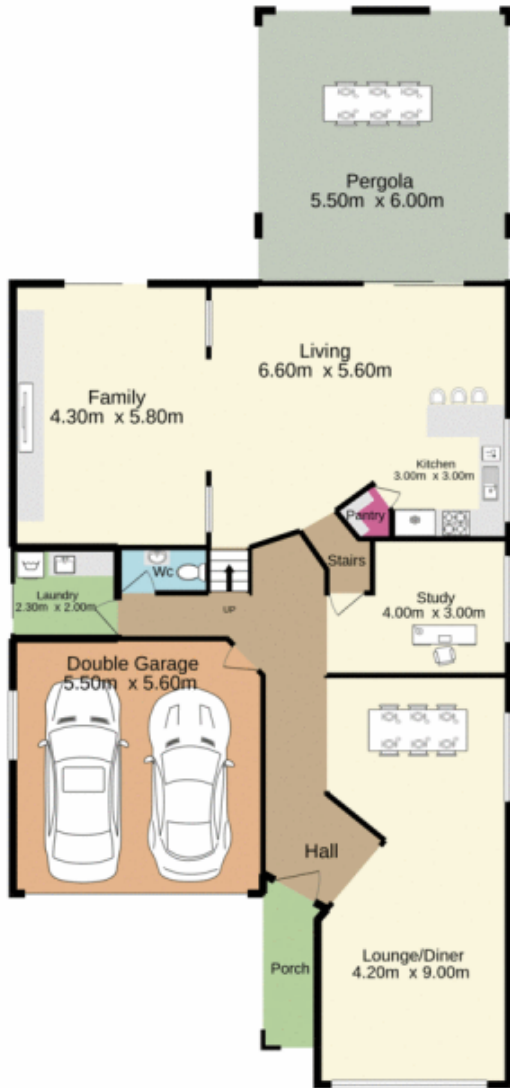


Andrew Lia
02 4735 2121

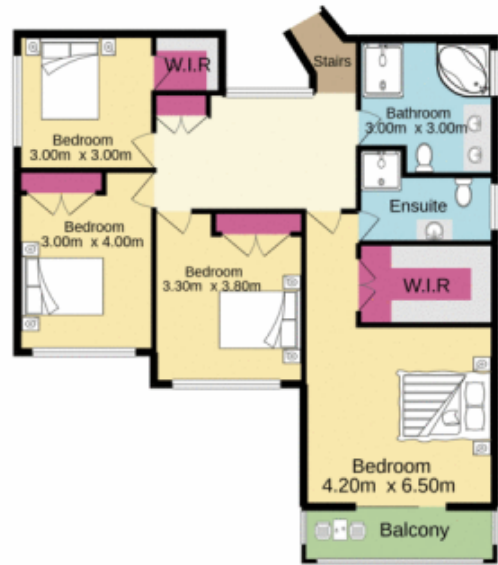


Diego Benitez
02 4733 6999

Ground floor



1st floor



Whilst every attempt has been made to ensure the accuracy of the floorplan contained here, measurements of doors, windows, rooms and any other items are approximate and no responsibility is taken for any error, omission or mis-statement. This plan is for illustrative purposes only and should be used as such by any prospective purchaser. The services, systems and appliances shown have not been tested and no guarantee as to their operability or efficiency can be given.
Made with Metropix ©2021