



11 Highdale Terrace Glenmore Park NSW

4  2  4 

Architecturally designed and positioned on a rare 600+sqm parcel of land. Well proportioned living zones combine with wonderfully high ceilings that enhances the well thought out design. Treat yourself to something that is well and truly above average!

- + Three step cornice step (selected areas)
- + Ducted Air Con / Fireplace / Ceiling Fans
- + Strip lighting / Island bench with waterfall
- + Study / office nook
- + Dedicated theatre room
- + Plantation shutters
- + Side access

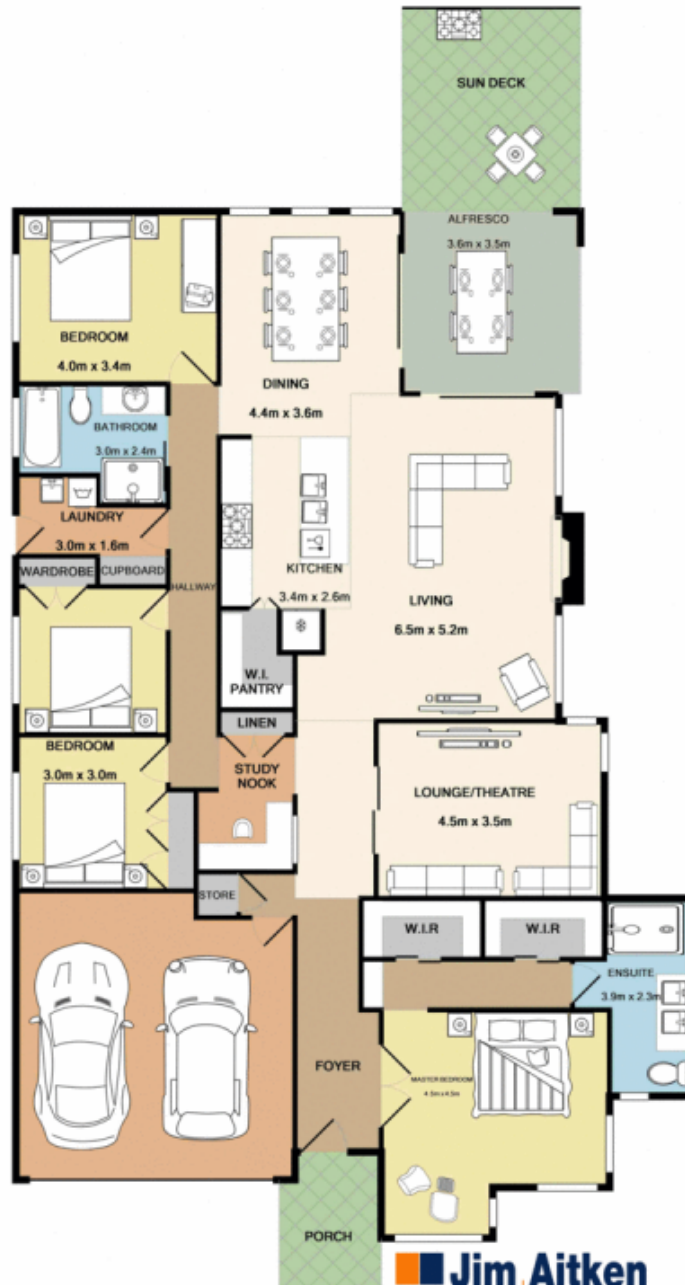
DISCLAIMER: Whilst we deem this information to be

[For full version visit the website](https://www.aitkenre.com.au)

Type : House
Price : \$ 850,000
Land Size : 601 sqm
View : <https://www.aitkenre.com.au/8058262>



David Reeves
02 4735 2121



Whilst every attempt has been made to ensure the accuracy of the floor plan contained here, measurements of doors, windows, rooms and any other items are approximate and no responsibility is taken for any error, omission, or mis-statement. This plan is for illustrative purposes only and should be used as such by any prospective purchaser. The services, systems and appliances shown have not been tested and no guarantee as to their operability or efficiency can be given.
 Made with Metropix (2021)