






48 Pyramid Street Emu Plains NSW

5  3  6 

- + Five spacious bedrooms, three with mirrored built-ins - master with WI robe and ensuite.
- + Stunning kitchen - granite tops, fridge & freezer, double drawer dishwasher, microwave.
- + Separate selection of formal and informal living zones spread across both levels.
- + Reverse cycle ducted air conditioning services both floors.
- + Multiple full bathrooms, ensuite and external guest's toilet.
- + Combination of tiled and polished timber flooring.
- + Natural gas points available for heating.
- + Alfresco space accessed via family and dining rooms.
- + Oversize garage along with a double carport, ample off street and secure parking

Type : House
Land Size : 695 sqm
View : <https://www.aitkenre.com.au/8058145>

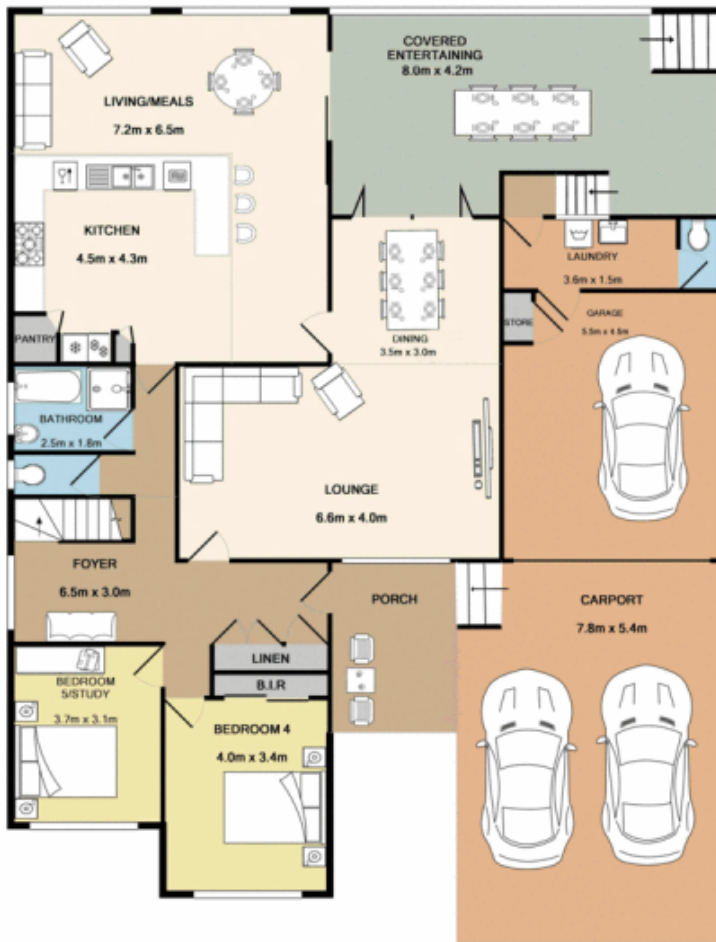


David Reeves
 02 4735 2121



Dillon Blundell
 02 4732 5055

[For full version visit the website](https://www.aitkenre.com.au)



GROUND FLOOR



1ST FLOOR

Jim Aitken
Partners

Whilst every attempt has been made to ensure the accuracy of the floor plan contained herein, measurements of doors, windows, rooms and any other items are approximate and no responsibility is taken for any error, omission, or mis-statement. This plan is for illustrative purposes only and should be used as such by any prospective purchaser. The services, systems and appliances shown have not been tested and no guarantee as to their operability or efficiency can be given.
Made with Metropix ©2018