




6 Kuraji Close Glenmore Park NSW

4  2  4 

This fantastic family home combines comfortable living and a floor plan to suit the growing family. Enjoying all the ease of single level living, the home features four generously sized bedrooms with the master boasting an ensuite and a walk in robe. Your children and pets will love the grassed yard and the double garage will cater for your car and storage needs.

- * Open plan design
- * Masterton built
- * Great size yard
- * Split system A/C
- * Multiple living spaces
- * Currently tenanted
- * Handy location

Type : House
Land Size : 520 sqm
View : <https://www.aitkenre.com.au/8057943>

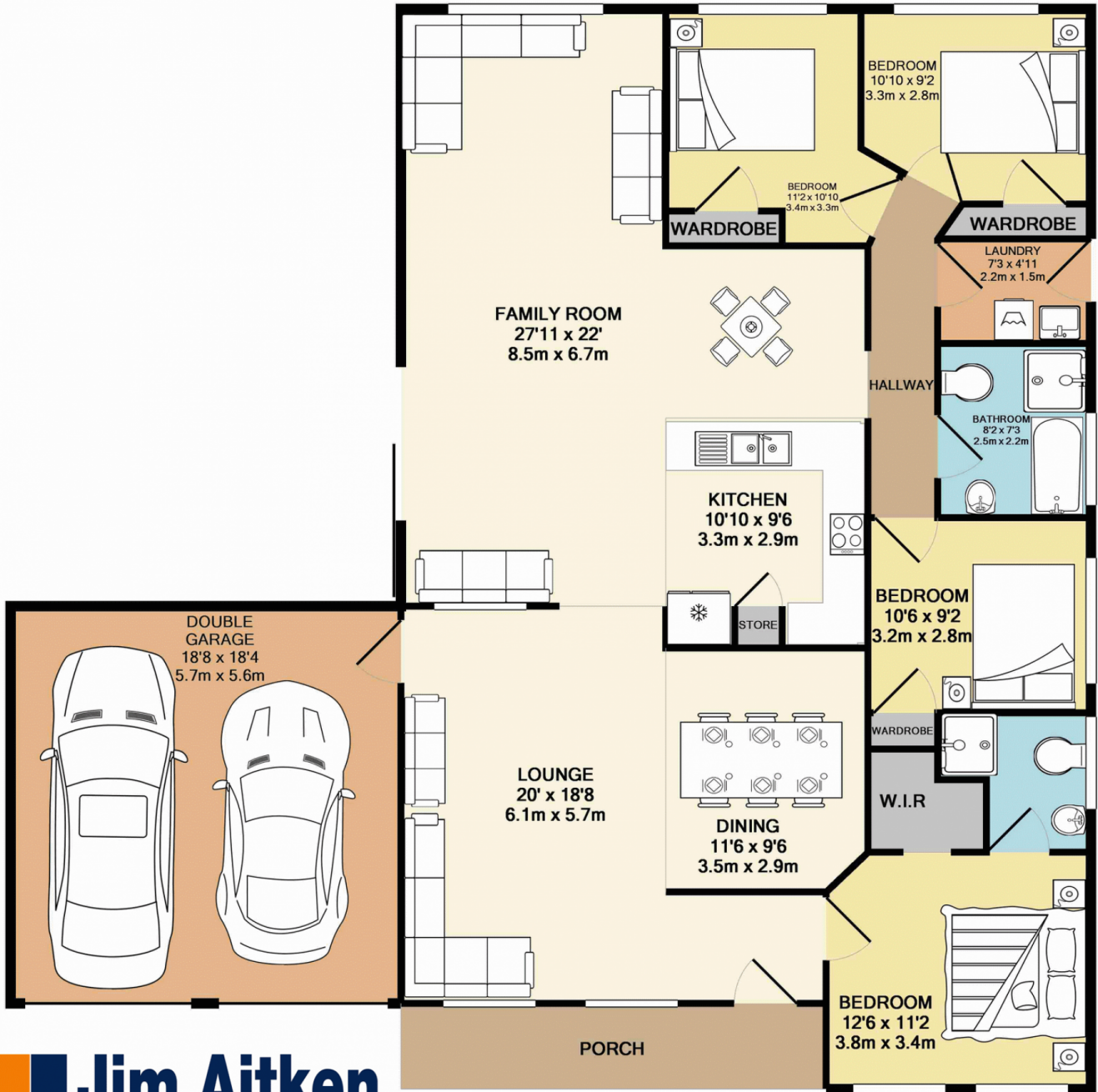


David Reeves
02 4735 2121



Andrew Lia
02 4735 2121

[For full version visit the website](https://www.aitkenre.com.au)



Whilst every attempt has been made to ensure the accuracy of the floor plan contained here, measurements of doors, windows, rooms and any other items are approximate and no responsibility is taken for any error, omission, or mis-statement. This plan is for illustrative purposes only and should be used as such by any prospective purchaser. The services, systems and appliances shown have not been tested and no guarantee as to their operability or efficiency can be given
 Made with Metropix ©2017