



#### 4 Hessel Place Emu Heights NSW

5  3  4 

Enjoying as leafy backdrop at the foot of the Blue Mountains is a tranquil lifestyle that will make you the envy of your friends. Set across three levels the home provides generous servings of formal and informal living zones that combine with spacious bedrooms and modern inclusions. The tranquil rear grounds are often enjoyed by the local bird life and creates a peaceful sanctuary for a quiet cup of tea.

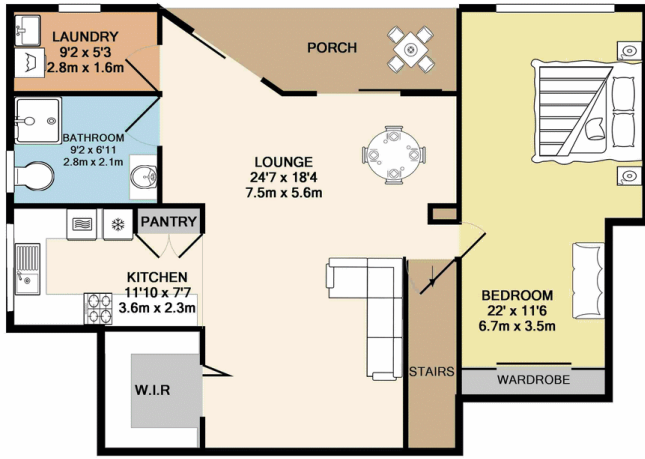
- \* In law accommodation
- \* Stunning kitchen
- \* Flexible floor plan
- \* Ample storage
- \* Solar electricity
- \* Cul-de sac location

**Type** : House  
**Land Size** : 750 sqm  
**View** : <https://www.aitkenre.com.au/8057941>

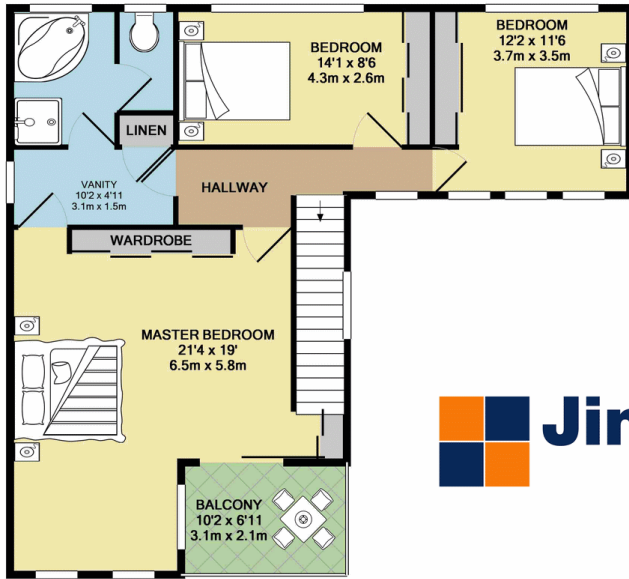


**David Reeves**  
 02 4735 2121

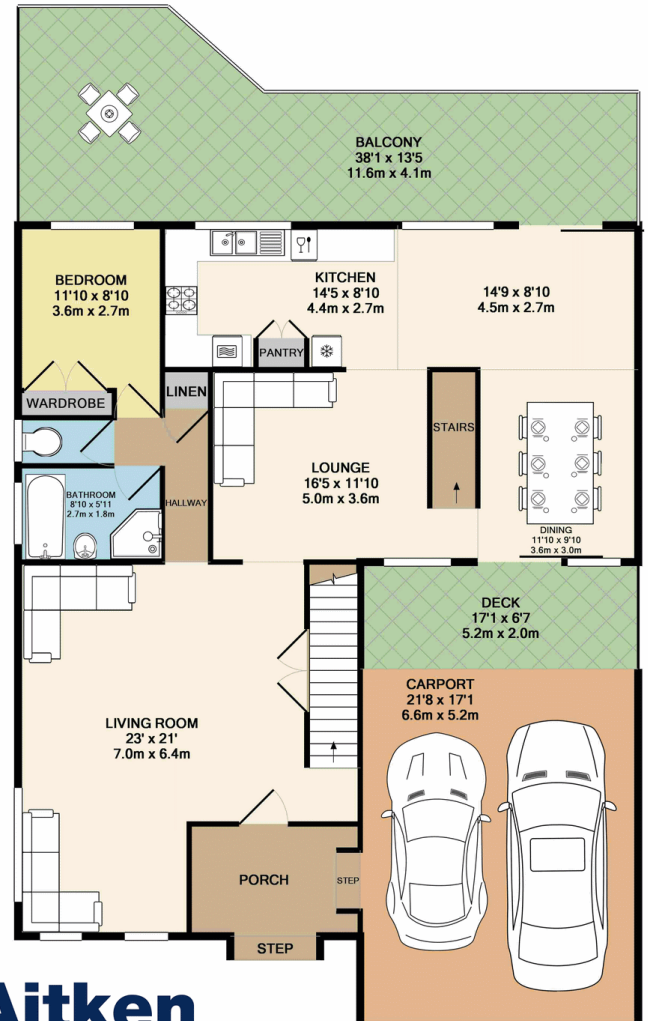
[For full version visit the website](https://www.aitkenre.com.au)



BASEMENT LEVEL



1ST FLOOR



GROUND FLOOR



Whilst every attempt has been made to ensure the accuracy of the floor plan contained here, measurements of doors, windows, rooms and any other items are approximate and no responsibility is taken for any error, omission, or mis-statement. This plan is for illustrative purposes only and should be used as such by any prospective purchaser. The services, systems and appliances shown have not been tested and no guarantee as to their operability or efficiency can be given  
Made with Metropix ©2017