



1 Monaro Place Emu Plains NSW

4  2  10 

Nestled on the high side of the street in a great pocket of Emu Plains, is this superb family home. With plenty of size for the growing family, the floorplan encompasses four bedrooms, two bathrooms, two living areas and a double garage and the size doesn't stop there! On offer there is also a three-car carport, a well-appointed kitchen and a massive area downstairs with a variety of uses.

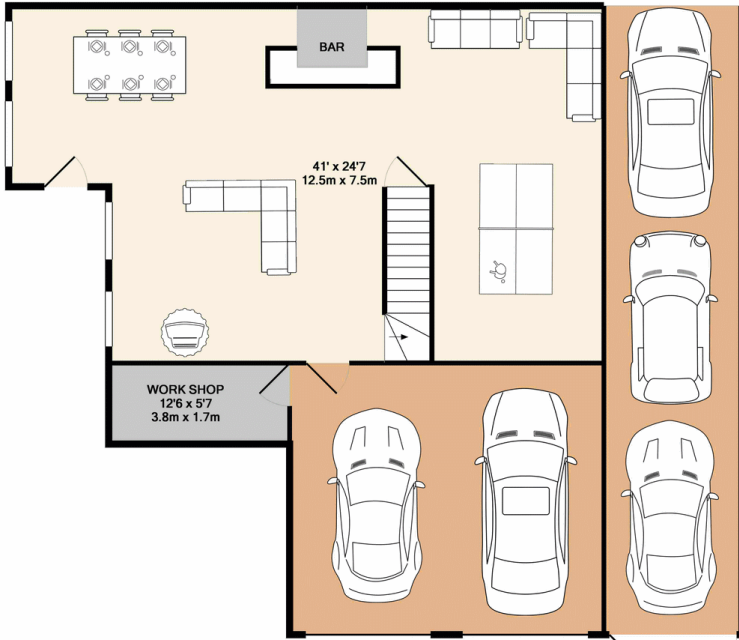
- * Four bedrooms (with built ins)
- * Two bathrooms with en-suite to main
- * Multiple living rooms
- * Double garage under main roof with internal access
- * Salt water in-ground swimming pool
- * Ducted air conditioning throughout
- * 790sqm corner block

Type : House
Land Size : 790 sqm
View : <https://www.aitkenre.com.au/8057940>

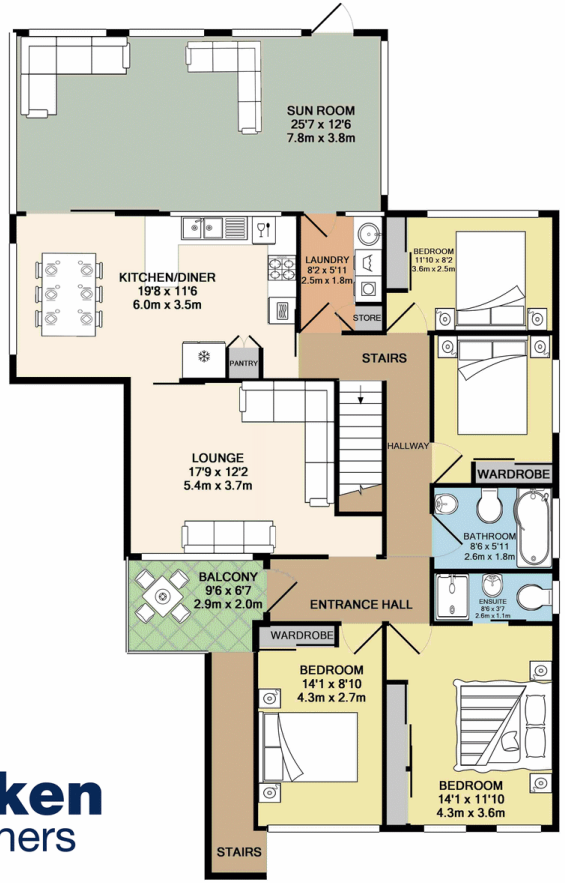


Andrew Lia
02 4735 2121

[For full version visit the website](https://www.aitkenre.com.au)



GROUND FLOOR



1ST FLOOR

Whilst every attempt has been made to ensure the accuracy of the floor plan contained here, measurements of doors, windows, rooms and any other items are approximate and no responsibility is taken for any error, omission, or mis-statement. This plan is for illustrative purposes only and should be used as such by any prospective purchaser. The services, systems and appliances shown have not been tested and no guarantee as to their operability or efficiency can be given.
Made with Metropix ©2017

