



48 Russell Street Emu Plains NSW

3  1  2 

The moment you arrive you will be charmed by this beautifully maintained family home. The allure continues throughout the three bedrooms, living areas, modern kitchen and three-way bathroom. If you are not already sold, the undercover entertaining area and established gardens in the backyard will win you over. Located minutes' walk to schools and shops, this property is perfect for a family or astute investor.

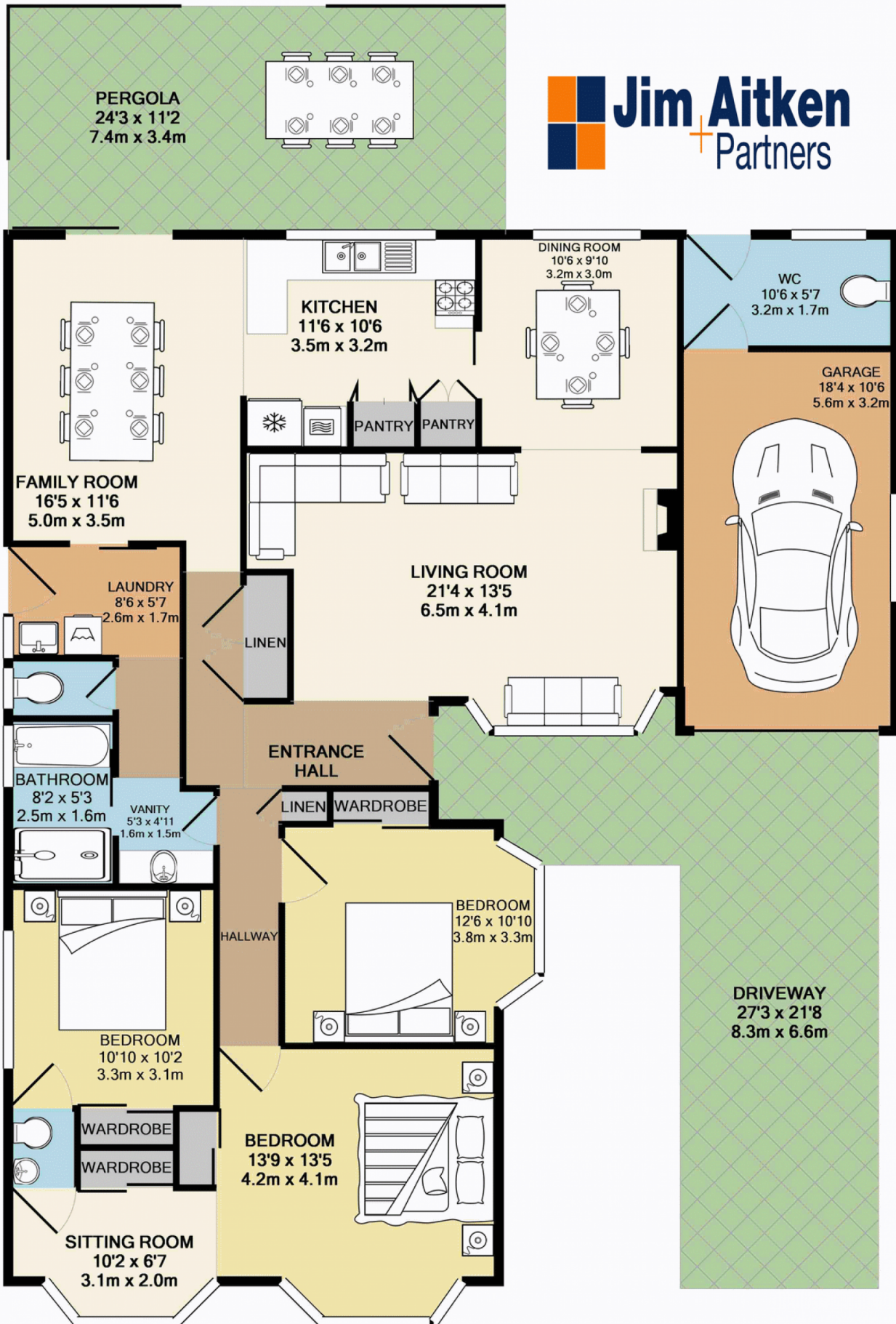
Type : House
Land Size : 682 sqm
View : <https://www.aitkenre.com.au/8057914>

- * Ducted air-conditioning
- * Two generous living areas
- * Separate dining room
- * Modern bathroom
- * External toilet
- * Easy access to M4 motorway



David Reeves
02 4735 2121

[For full version visit the website](https://www.aitkenre.com.au)



Whilst every attempt has been made to ensure the accuracy of the floor plan contained here, measurements of doors, windows, rooms and any other items are approximate and no responsibility is taken for any error, omission, or mis-statement. This plan is for illustrative purposes only and should be used as such by any prospective purchaser. The services, systems and appliances shown have not been tested and no guarantee as to their operability or efficiency can be given
Made with Metropix ©2016