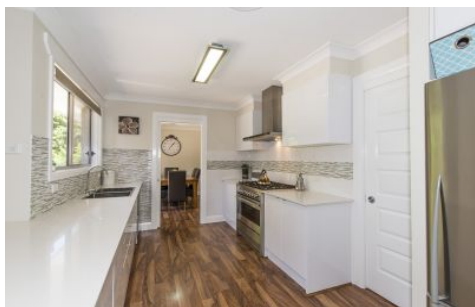







**NEPEAN
RIVER**



4 Workman Place Leonay NSW

4  2  4 

With the focus on carefree living, this home enjoys all the requirements that will make you the envy of your friends. You'll love the balance of indoor and outdoor living, modern inclusions and family friendly floor plan. Secluded from the street and located moments from the Nepean River and Golf Course, you'll need to search hard to find this hidden gem.

- * Fully fenced + electric gate
- * Rear pedestrian access to River
- * In ground pool + grassed yard
- * Ducted Air + ceiling fans
- * Ample secure car parking
- * BI robes + modern flooring
- * Cul de sac position

Type : House
Land Size : 1081 sqm
View : <https://www.aitkenre.com.au/8057882>



David Reeves
02 4735 2121

[For full version visit the website](https://www.aitkenre.com.au)