




### 130 Ridgehaven Road Silverdale NSW

4  3  8 

Welcome to Ridgehaven house nestled on approximately one acre and set back from an already quiet street. Ridgehaven house enjoys all the peace and quiet you could want in a home. Offering four bedrooms + study and boasting a pleasant mix of formal and informal living spaces. This home will comfortably cater to the growing family's needs;

Featuring;

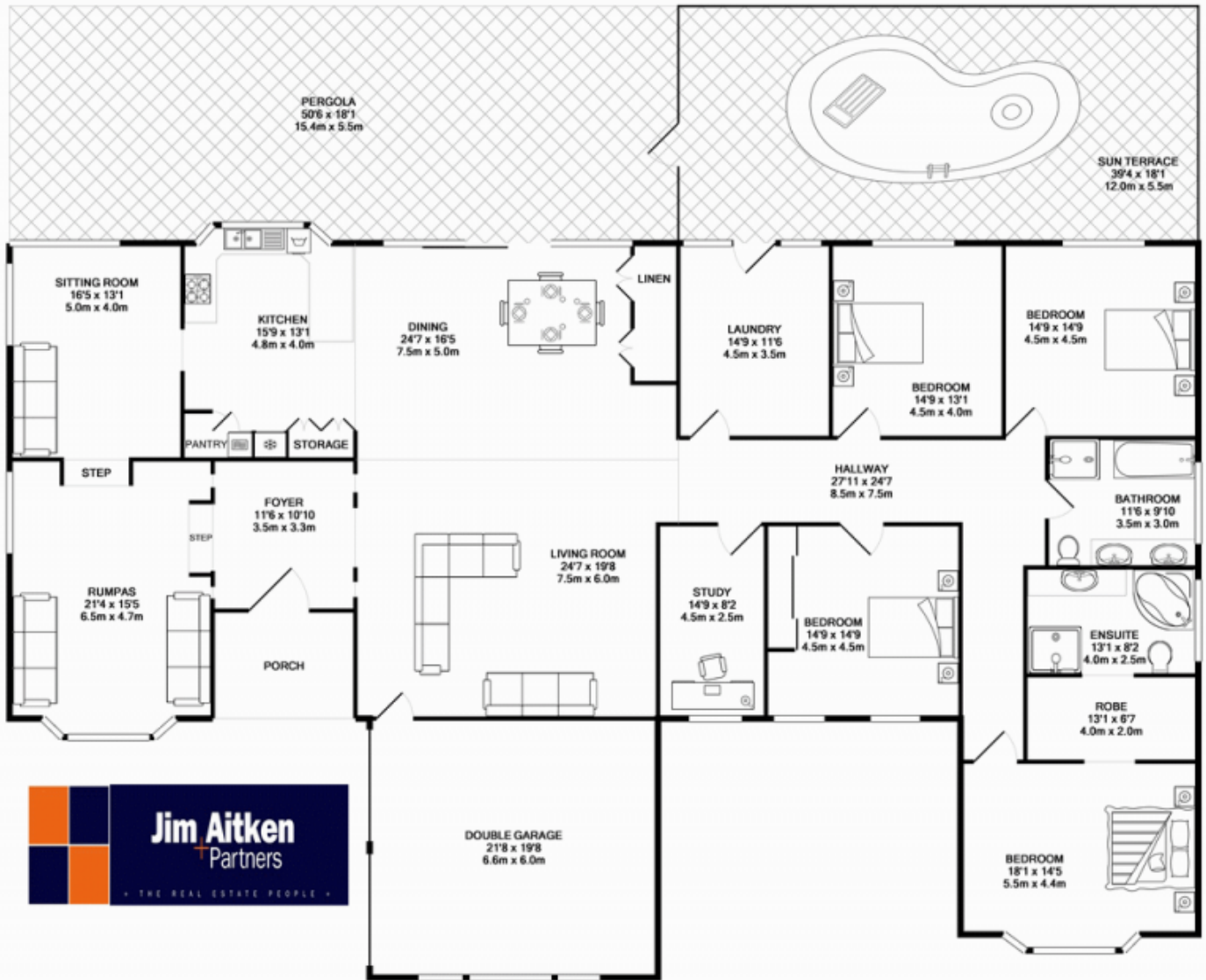
- \* Saltwater in ground swimming pool
- \* Ducted air conditioning
- \* Alarm
- \* Double garage + detached single garage
- \* Built Ins to all bedrooms
- \* En suite to main

**Type** : House  
**Building Size** : 300 sqm  
**Land Size** : 4034 sqm  
**View** : <https://www.aitkenre.com.au/8057782>



**David Reeves**  
 02 4735 2121

[For full version visit the website](https://www.aitkenre.com.au)



Whilst every attempt has been made to ensure the accuracy of the floor plan contained here, measurements of doors, windows, rooms and any other items are approximate and no responsibility is taken for any error, omission, or mis-statement. This plan is for illustrative purposes only and should be used as such by any prospective purchaser. The services, systems and appliances shown have not been tested and no guarantee as to their operability or efficiency can be given.  
Made with Metropix ©2015