



2 Hessel Place Emu Heights NSW

4  2 

Occupying a huge parcel of land in a whisper quiet location is a home that will please you at every turn. Stretched across a split level floor plan, the residence showcases vast living spaces that combine with four bedrooms. The kitchen and bathrooms have been tastefully renovated, you'll enjoy the comfort of ducted air conditioning and the advantage of an in ground pool.

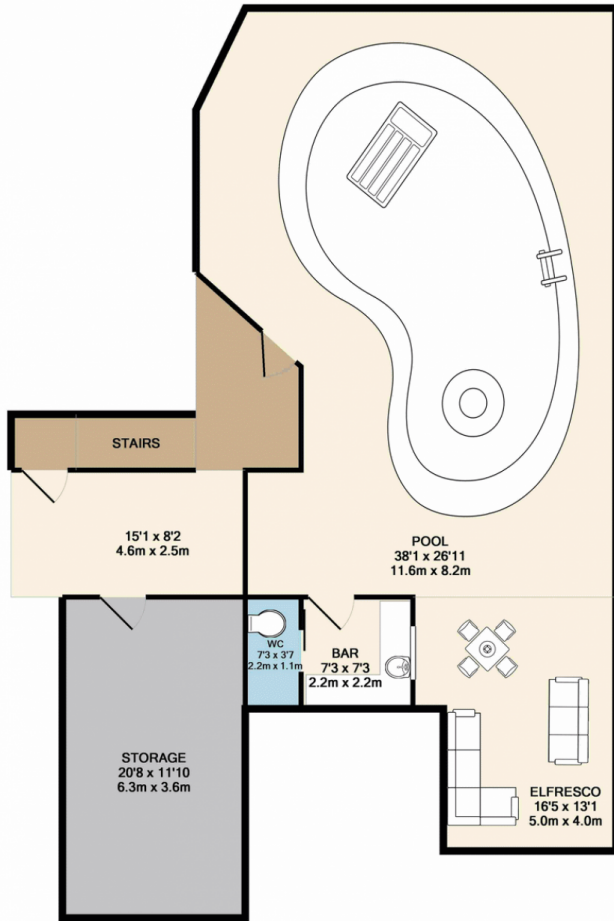
- * Optional study/parents retreat
- * 2x off street parking bays
- * Spectacular kitchen + bathrooms
- * Ducted air conditioning
- * 2x outdoor entertaining zones
- * Massive grassed yard
- * Lounge/dining/family rooms

Type : House
Land Size : 852 sqm
View : <https://www.aitkenre.com.au/8057747>



David Reeves
 02 4735 2121

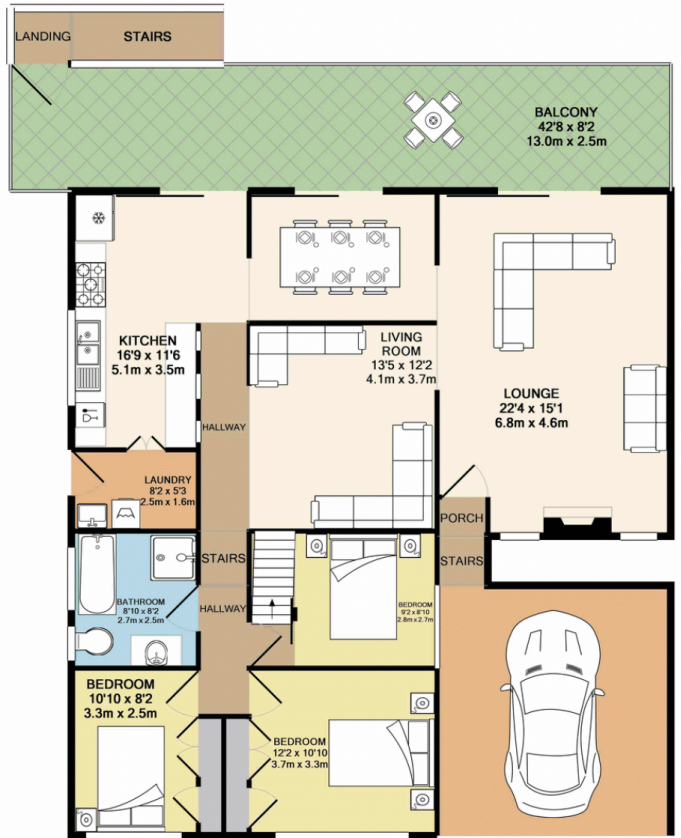
[For full version visit the website](https://www.aitkenre.com.au)



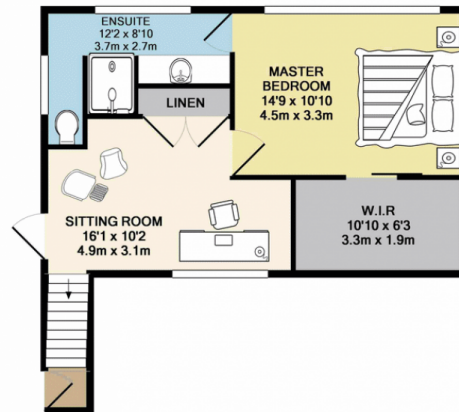
BASEMENT LEVEL

Whilst every attempt has been made to ensure the accuracy of the floor plan contained here, measurements of doors, windows, rooms and any other items are approximate and no responsibility is taken for any error, omission, or mis-statement. This plan is for illustrative purposes only and should be used as such by any prospective purchaser. The services, systems and appliances shown have not been tested and no guarantee as to their operability or efficiency can be given.

Made with Metropix ©2017



GROUND FLOOR



1ST FLOOR